

看图说话

2020年06月13日

分析师：卢旭

从业资格号：F3018897

投资咨询号：Z0011867

QQ：942978631, 1154393876

K MA5:3994.2 MA10:3974.7 MA20:3908.0 MA40:3881.3 MA60:3815.2

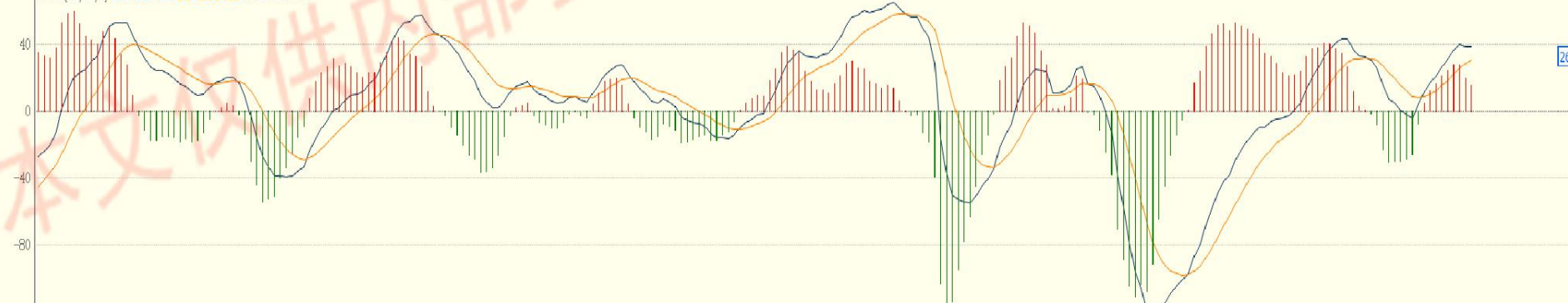


股指期货 操作等级★

★★★强★★中★弱

期价升破 3800 维持多头控盘区域内，暂看多持多。

MACD(12,26,9) DIFF:38.7889 DEA:30.5406 MACD:16.4968



K MA5:390.06 MA10:391.82 MA20:393.54 MA40:387.44 MA60:379.11

396.64

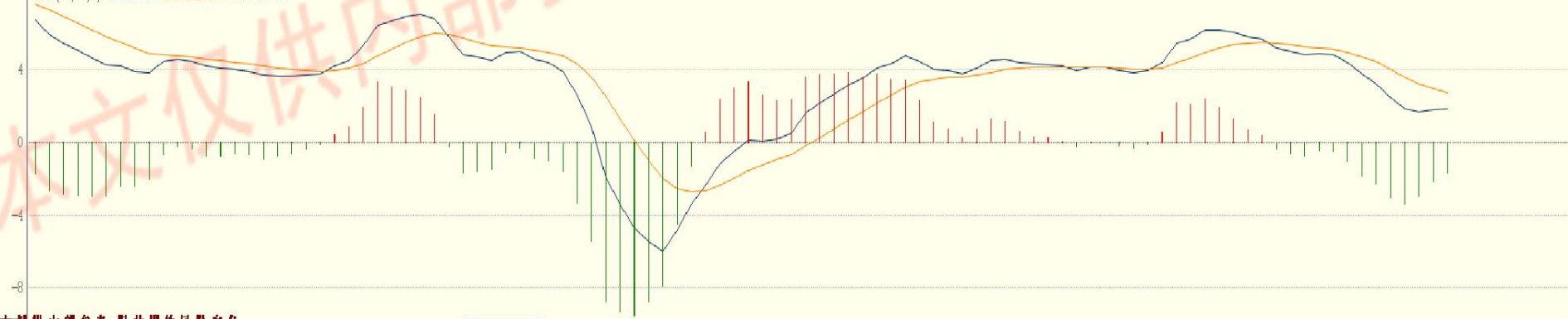


黄金操作等级★★

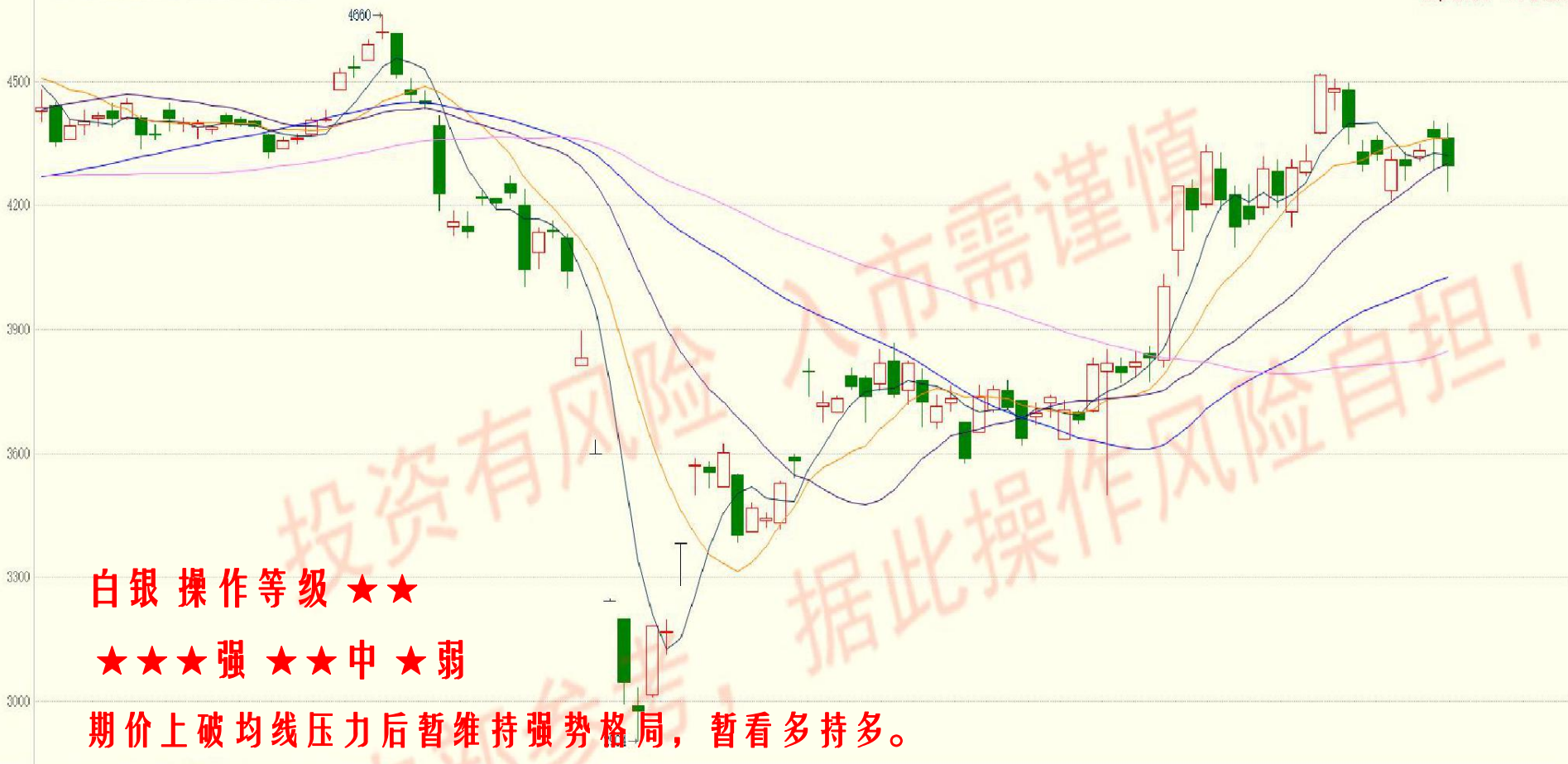
★★★强★★中★弱

期价上破高点压力位，处于多头强势区间，看多持多。

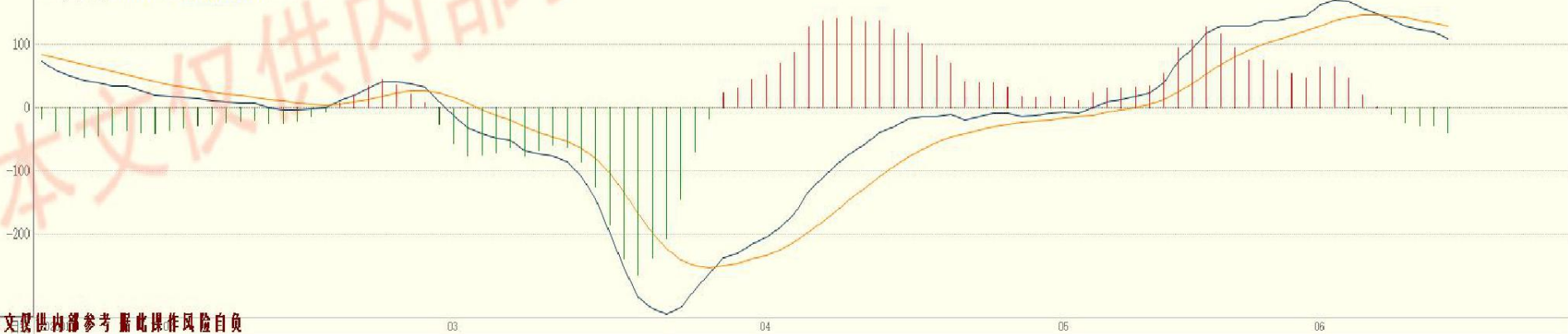
MACD(12,26,9) DIFF:1.8312 DEA:2.6919 MACD:-1.7213



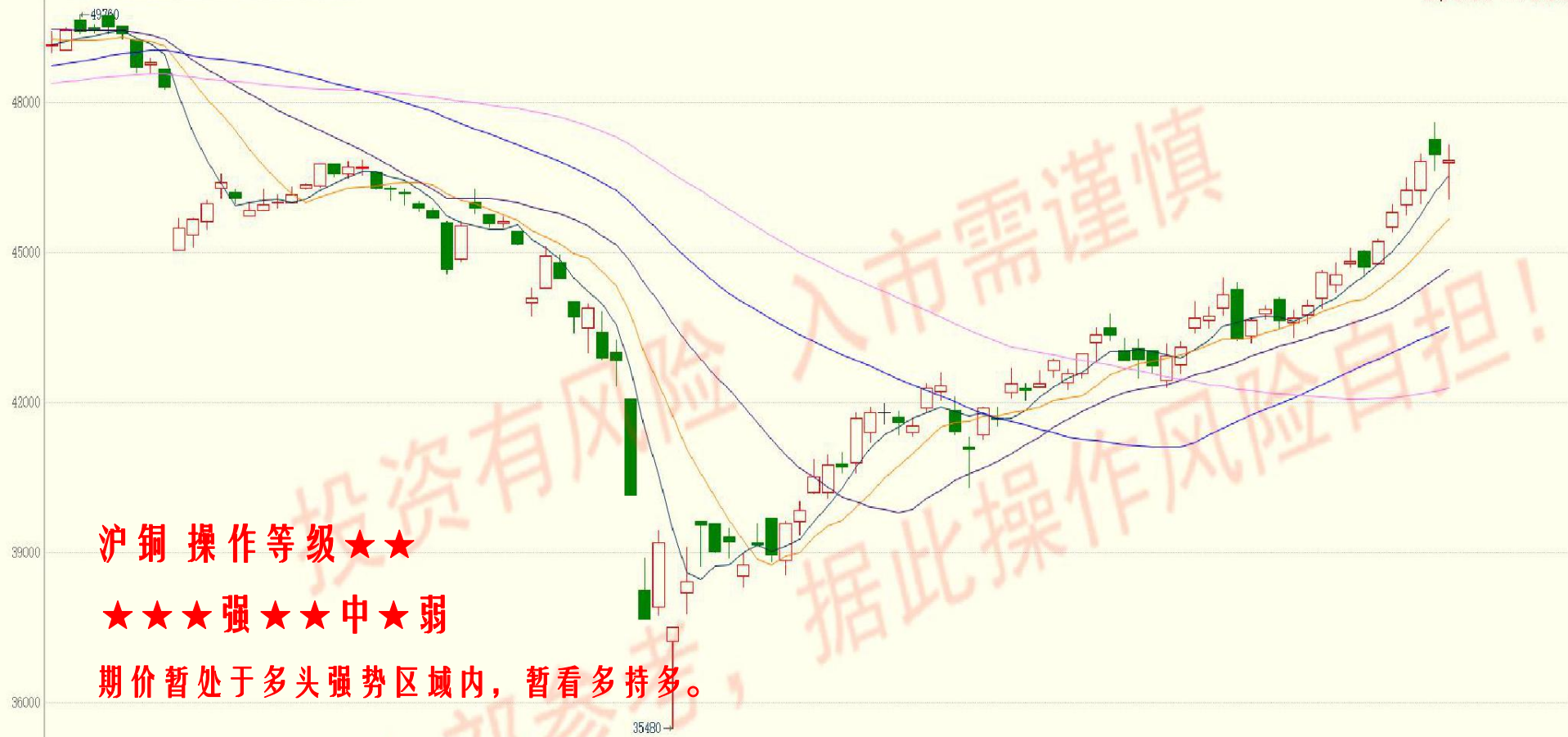
K MA5:4320 MA10:4361 MA20:4301 MA40:4027 MA60:3847



MACD(12,26,9) DIFF:109.5236 DEA:129.6994 MACD:-40.3516



K MA5:46534 MA10:45660 MA20:44667 MA40:43514 MA60:42296

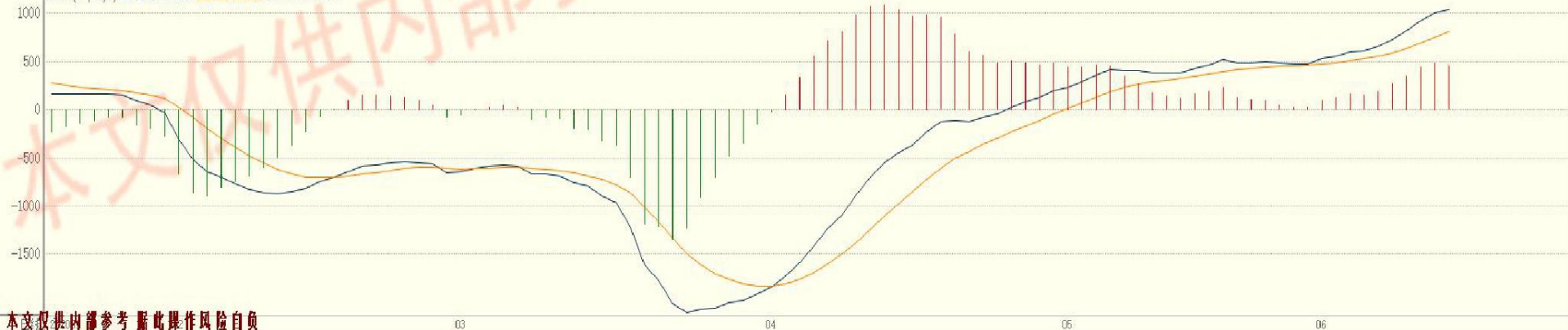


沪铜 操作等级★★

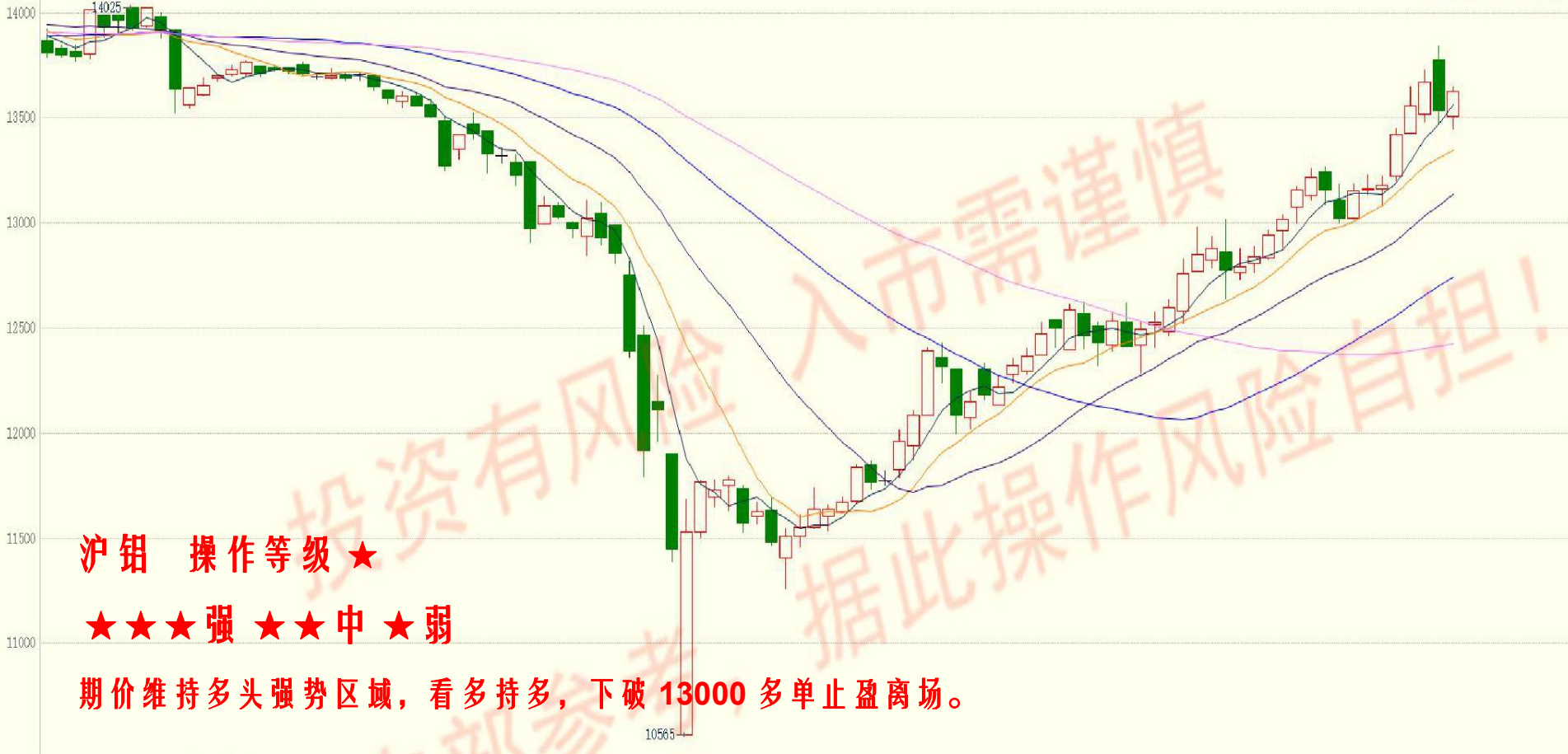
★★★强★★中★弱

期价暂处于多头强势区域内，暂看多持多。

MACD(12,26,9) DIFF:1040.3834 DEA:809.3199 MACD:462.1271



K MA5:13561 MA10:13348 MA20:13135 MA40:12745 MA60:12424

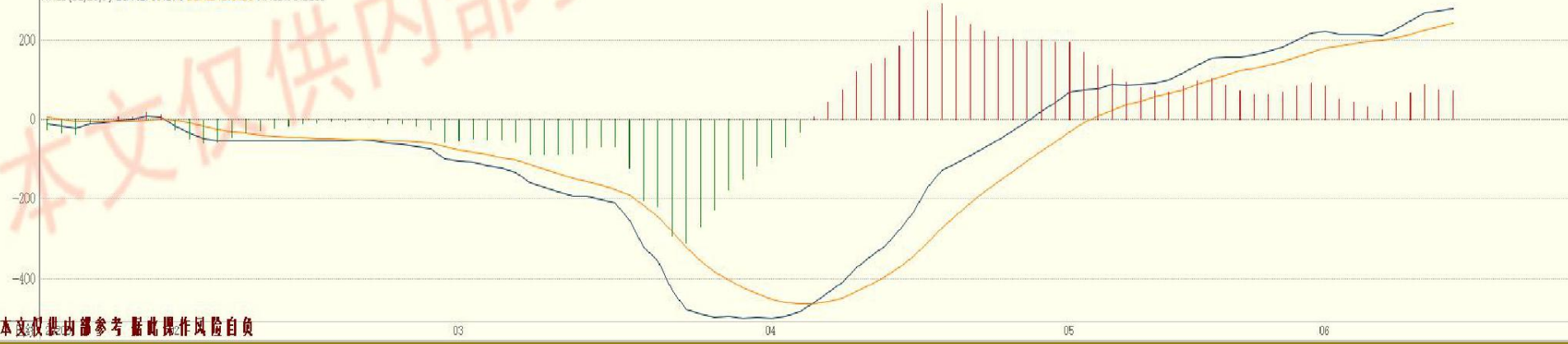


沪锡 操作等级 ★

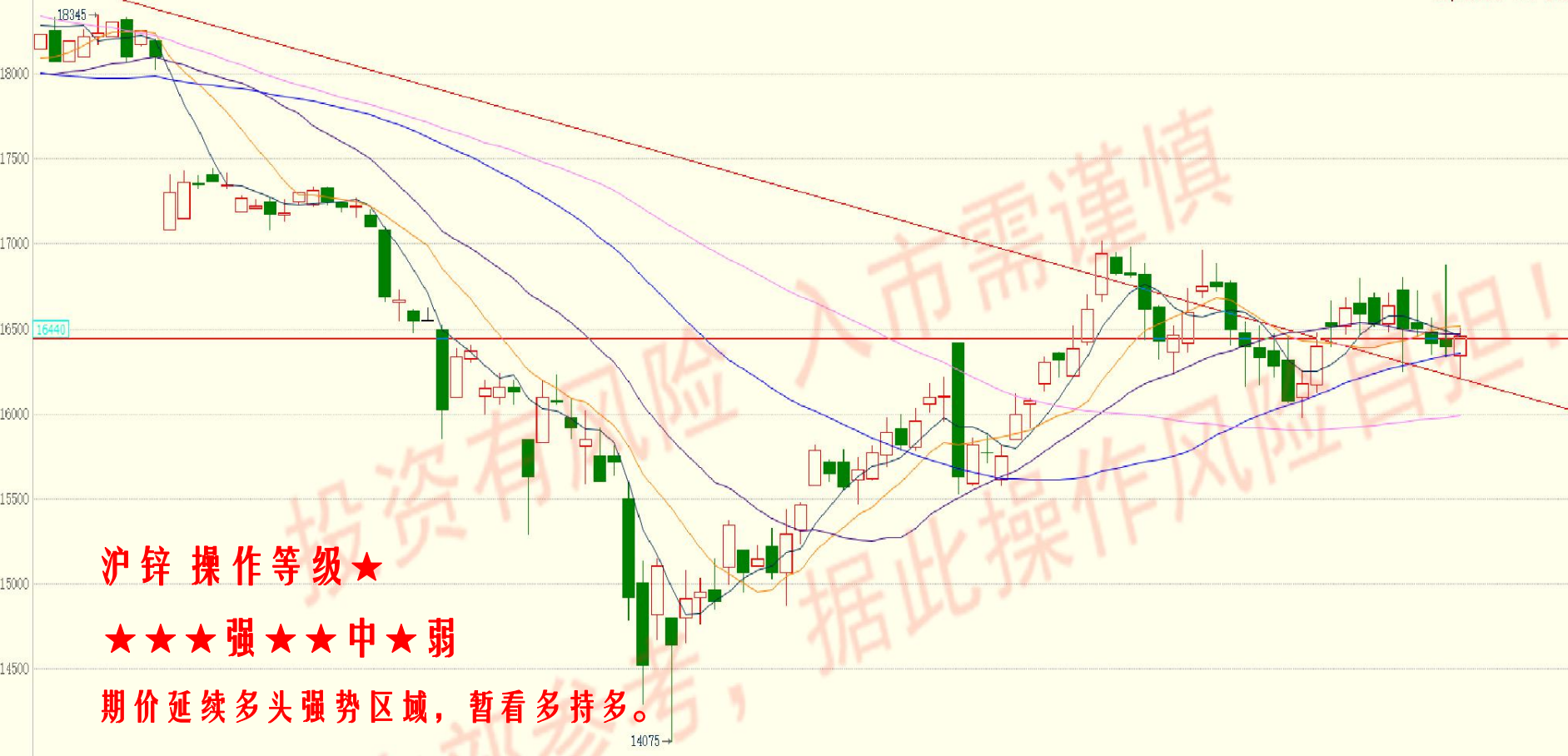
★★★强 ★★中 ★弱

期价维持多头强势区域，看多持多，下破 13000 多单止盈离场。

MACD(12,26,9) DIFF:279.4570 DEA:242.8428 MACD:73.2283



K MA5:16456 MA10:16517 MA20:16471 MA40:16355 MA60:15993

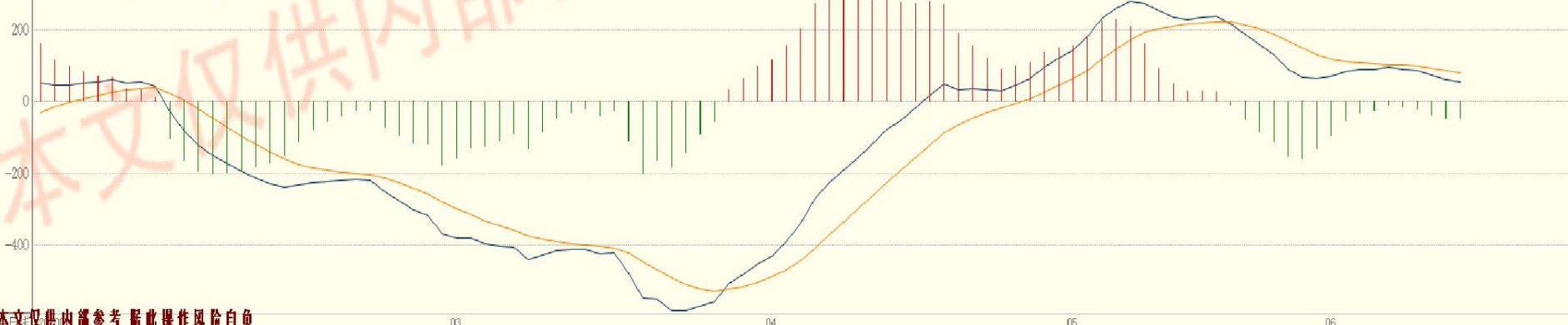


沪锌 操作等级★

★★★强★★中★弱

期价延续多头强势区域，暂看多持多。

MACD(12,26,9) DJF:54.5023 DEA:79.4918 MACD:-49.9790



K MA5:3609 MA10:3610 MA20:3568 MA40:3477 MA60:3425

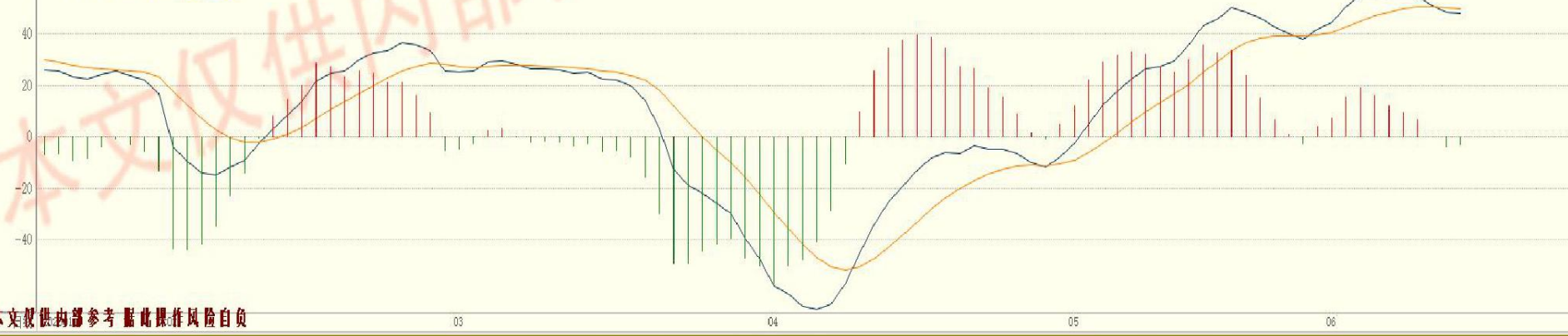


螺纹钢 操作等级★★

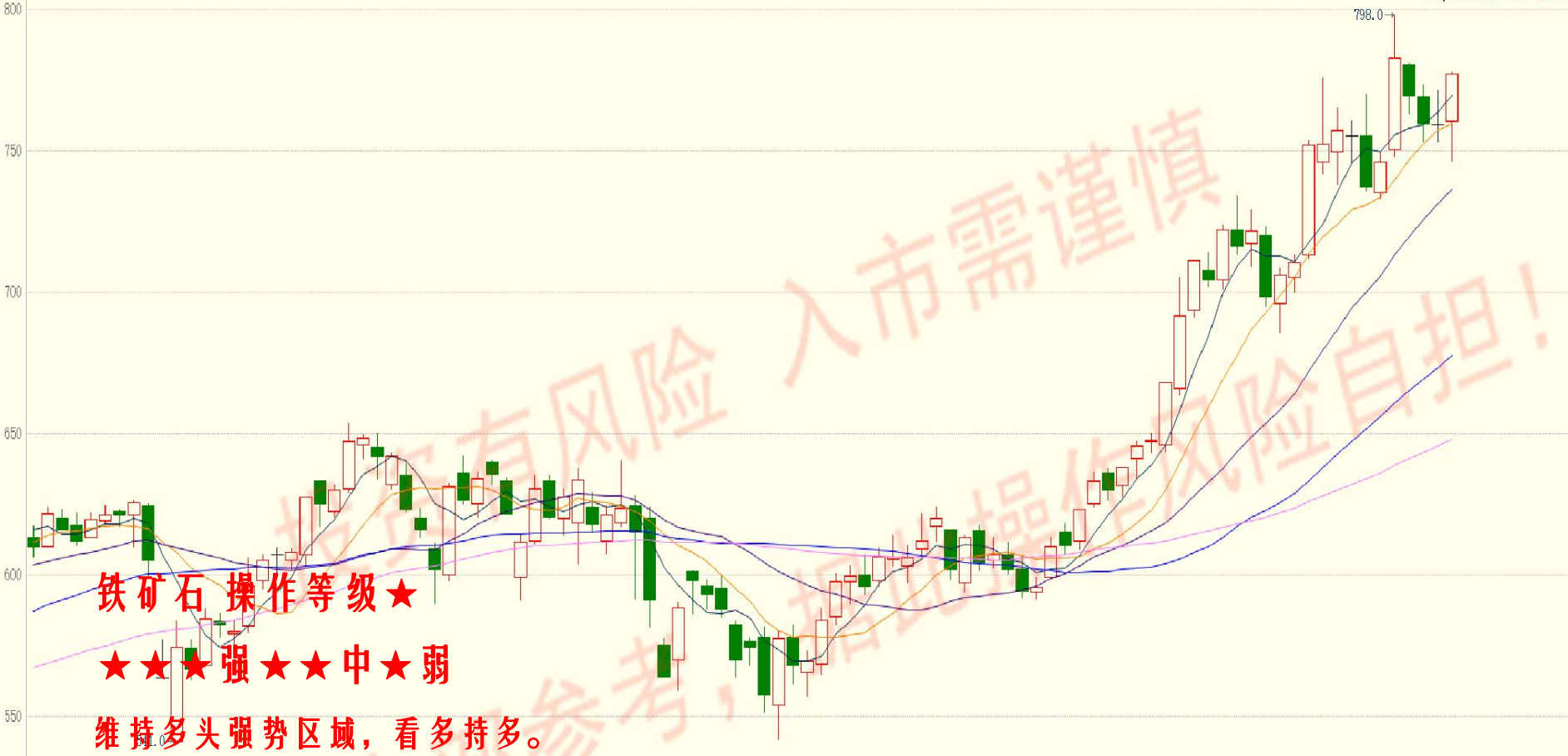
★★★强★★中★弱

期价上破压力位后，处于多头强势控盘区域，看多持多。

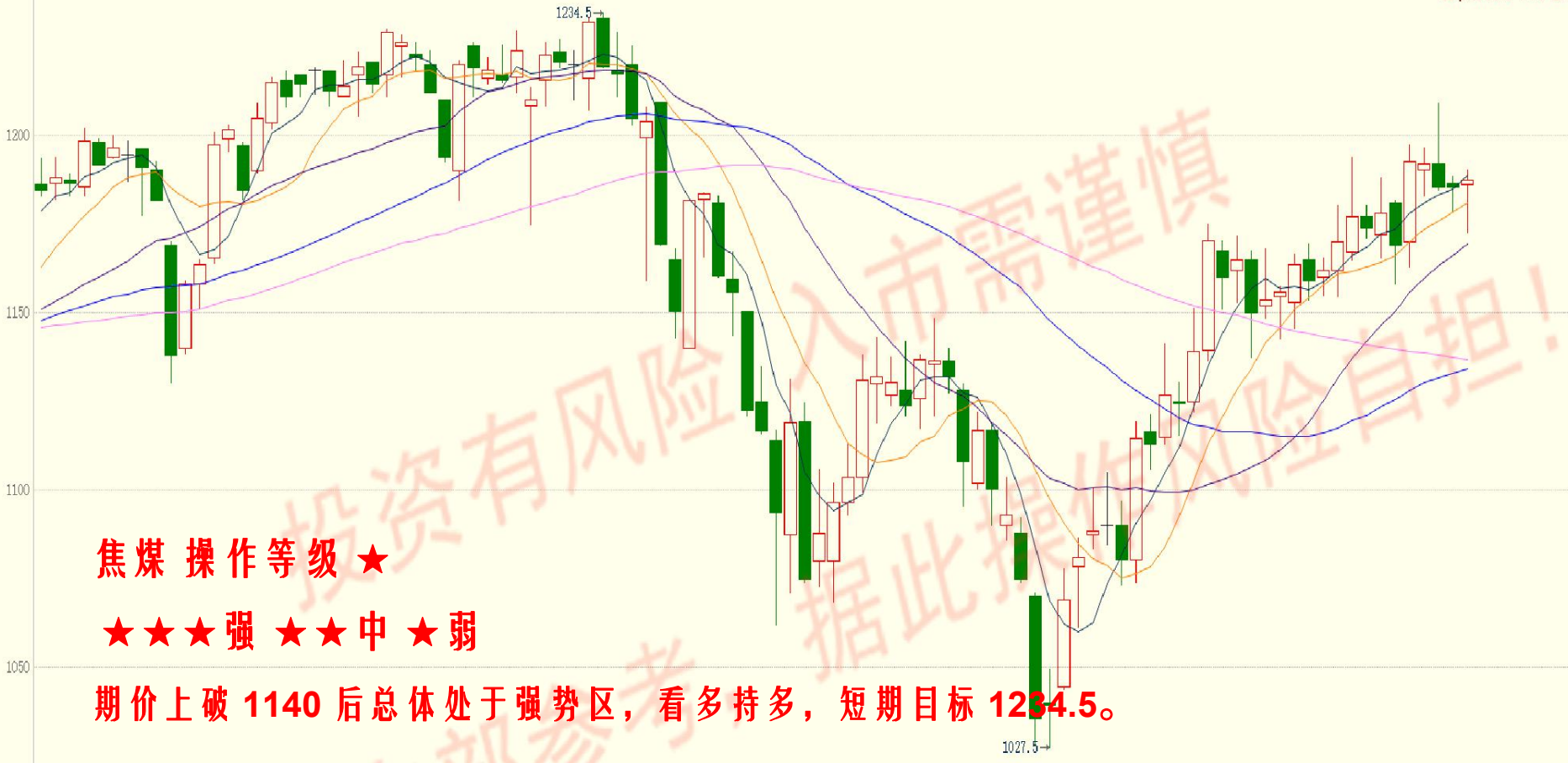
MACD(12,26,9) DIFF:48.1886 DEA:49.9418 MACD:3.5064



K MA5:769.6 MA10:759.5 MA20:736.5 MA40:677.5 MA60:648.0



K MA5:1188.6 MA10:1181.1 MA20:1169.5 MA40:1134.4 MA60:1136.9

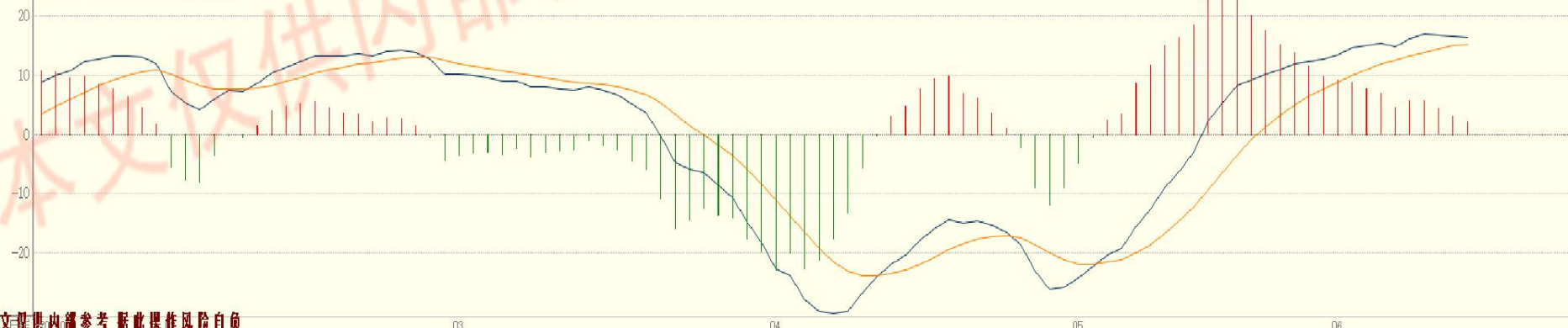


焦煤 操作等级 ★

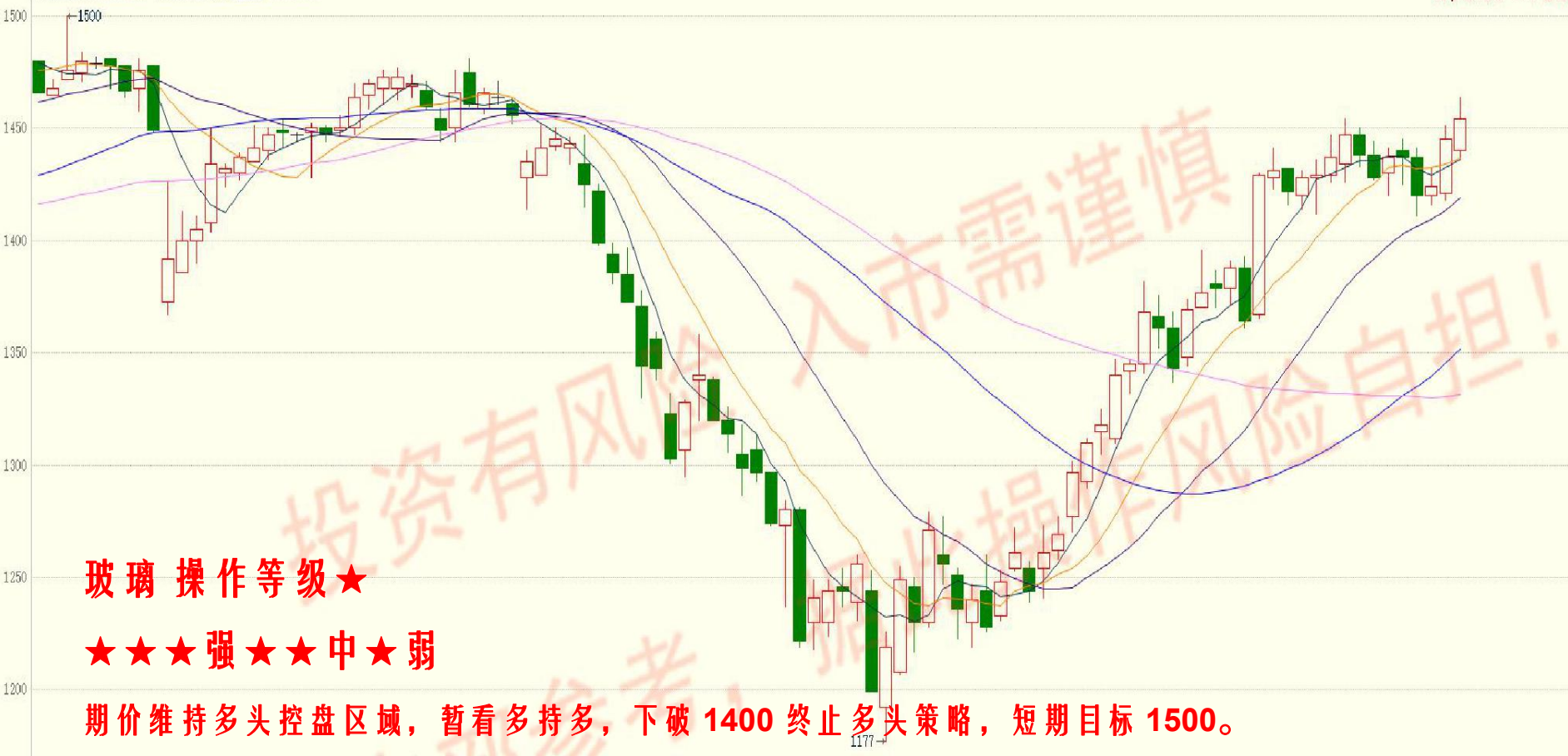
★★★强 ★★中 ★弱

期价上破 1140 后总体处于强势区，看多持多，短期目标 1234.5。

MACD(12,26,9) DIFF:16.3594 DEA:15.2426 MACD:2.12337



K MA5:1436 MA10:1437 MA20:1419 MA40:1351 MA60:1331



玻璃 操作等级★

★★★强★★中★弱

期价维持多头控盘区域，暂看多持多，下破 1400 终止多头策略，短期目标 1500。

MACD(12,26,9) DIFF:28.7695 DEA:30.7986 MACD:-4.0581

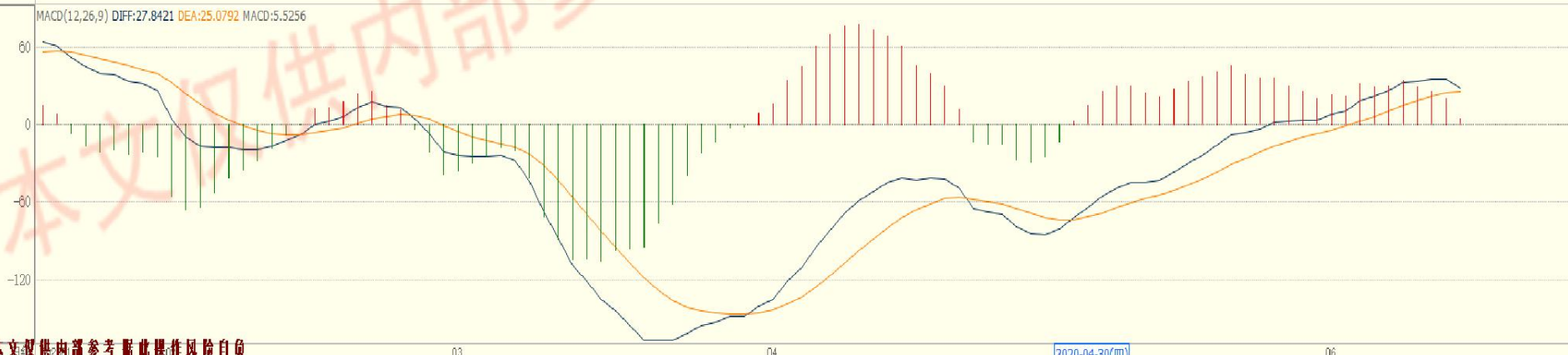




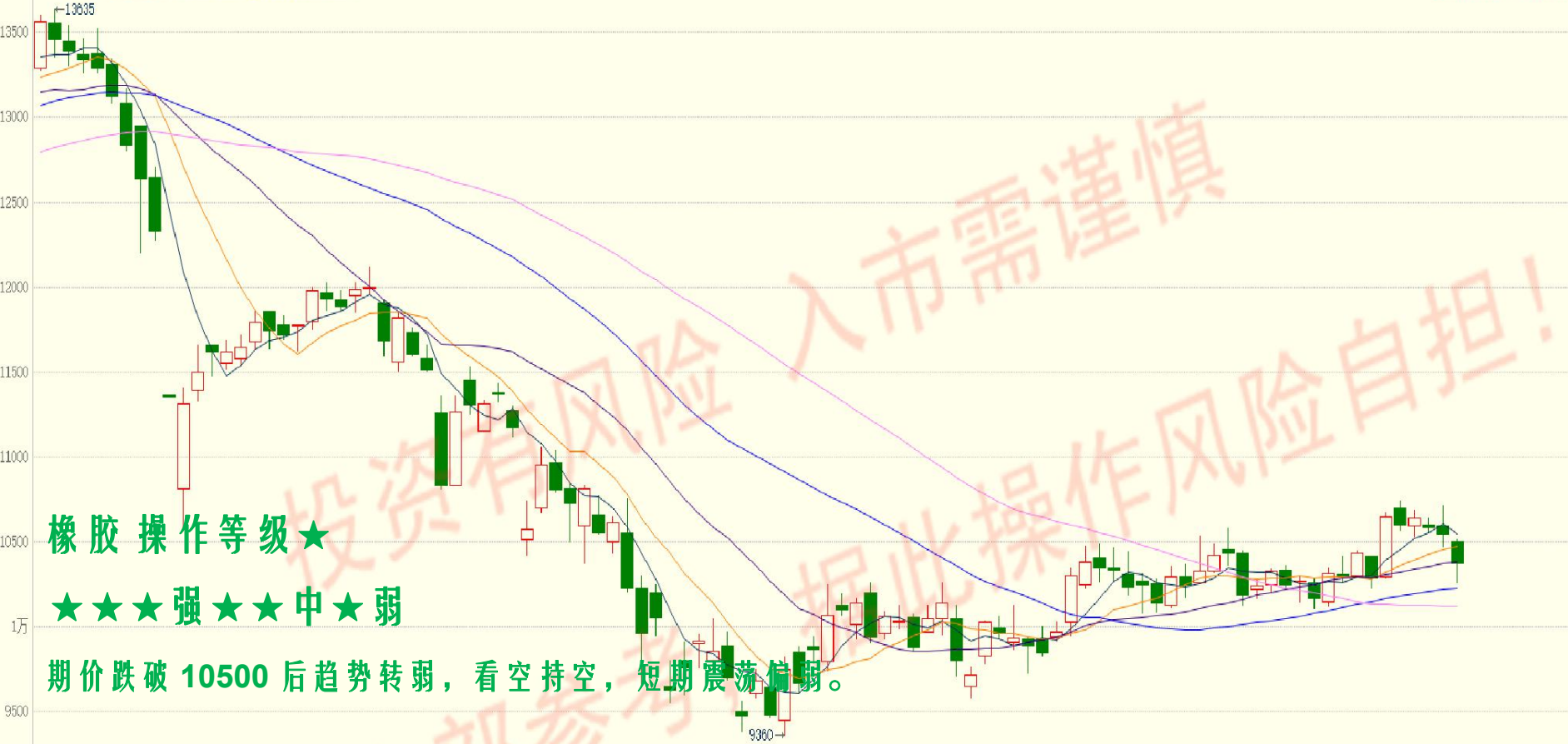
燃料油 操作等级★

★★★强★★中★弱

期价升破 1650 维持多头控盘区域，看多持多。



K MA5:10549 MA10:10472 MA20:10380 MA40:10228 MA60:10118

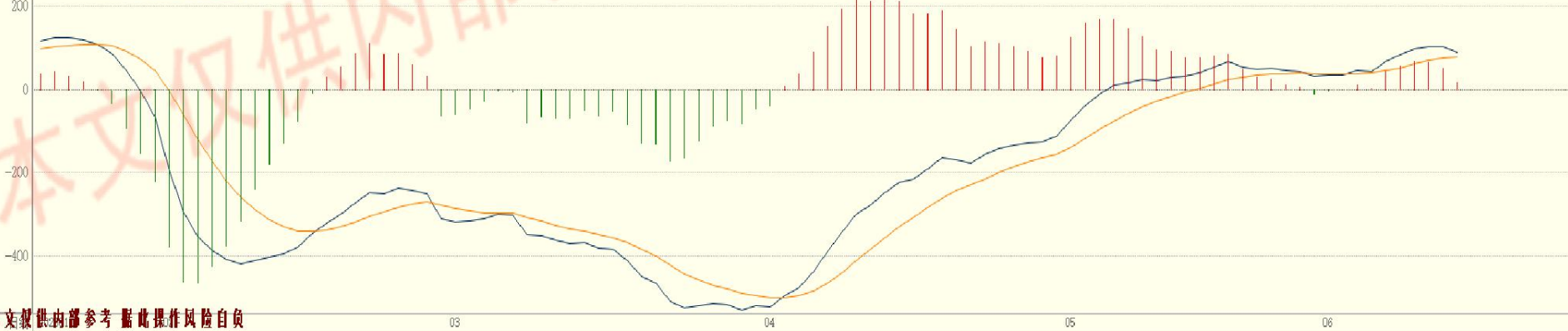


橡胶操作等级★

★★★强★★中★弱

期价跌破 10500 后趋势转弱，看空持仓，短期震荡偏弱。

MACD(12,26,9) DIFF:87.7626 DEA:78.3325 MACD:18.8602

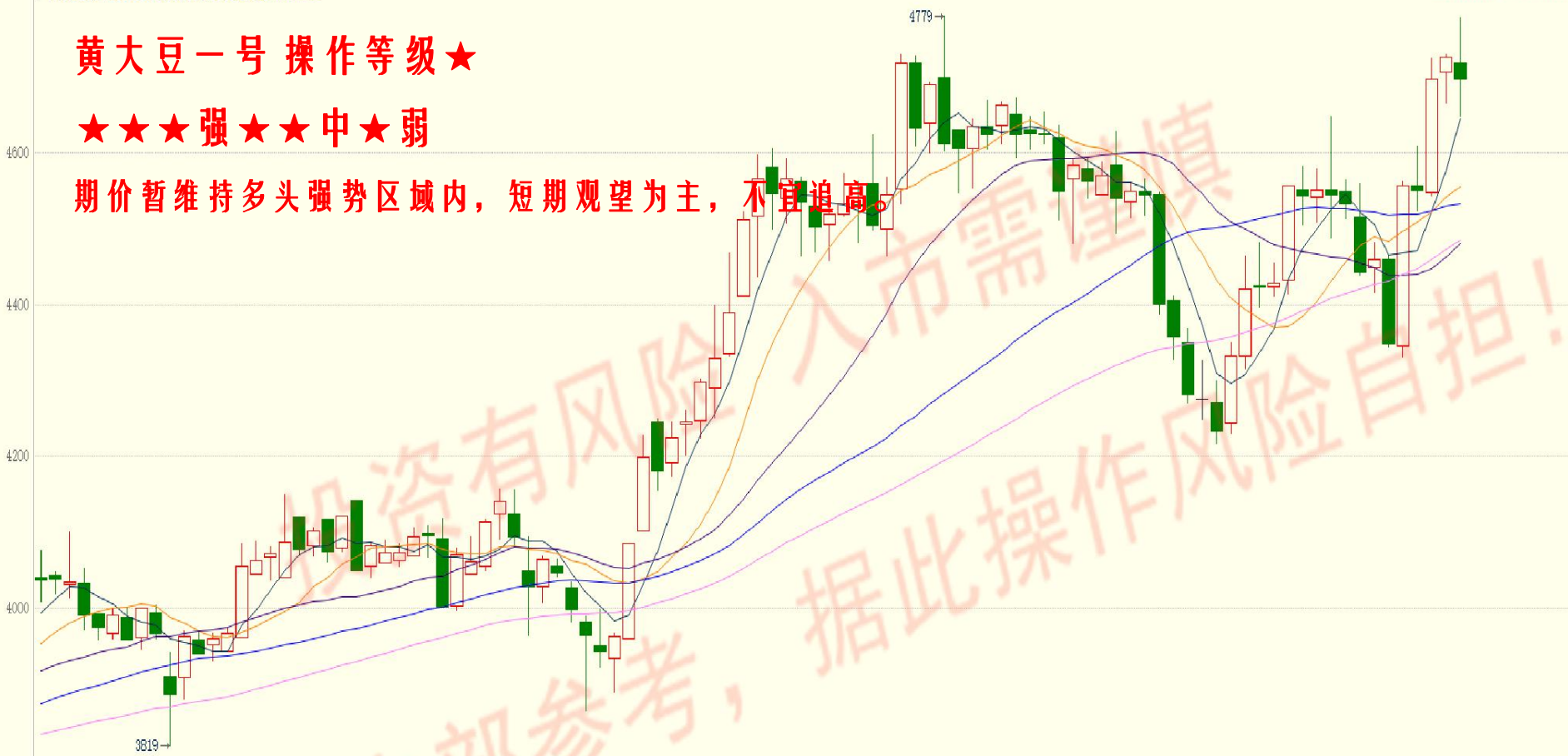


MA5:4645 MA10:4555 MA20:4480 MA40:4533 MA60:4485

黄大豆一号 操作等级★

★★★强★★中★弱

期价暂维持多头强势区域内，短期观望为主，不宜追高。



MACD(12,26,9) DIF:47.5228 DEA:18.2418 MACD:58.5621

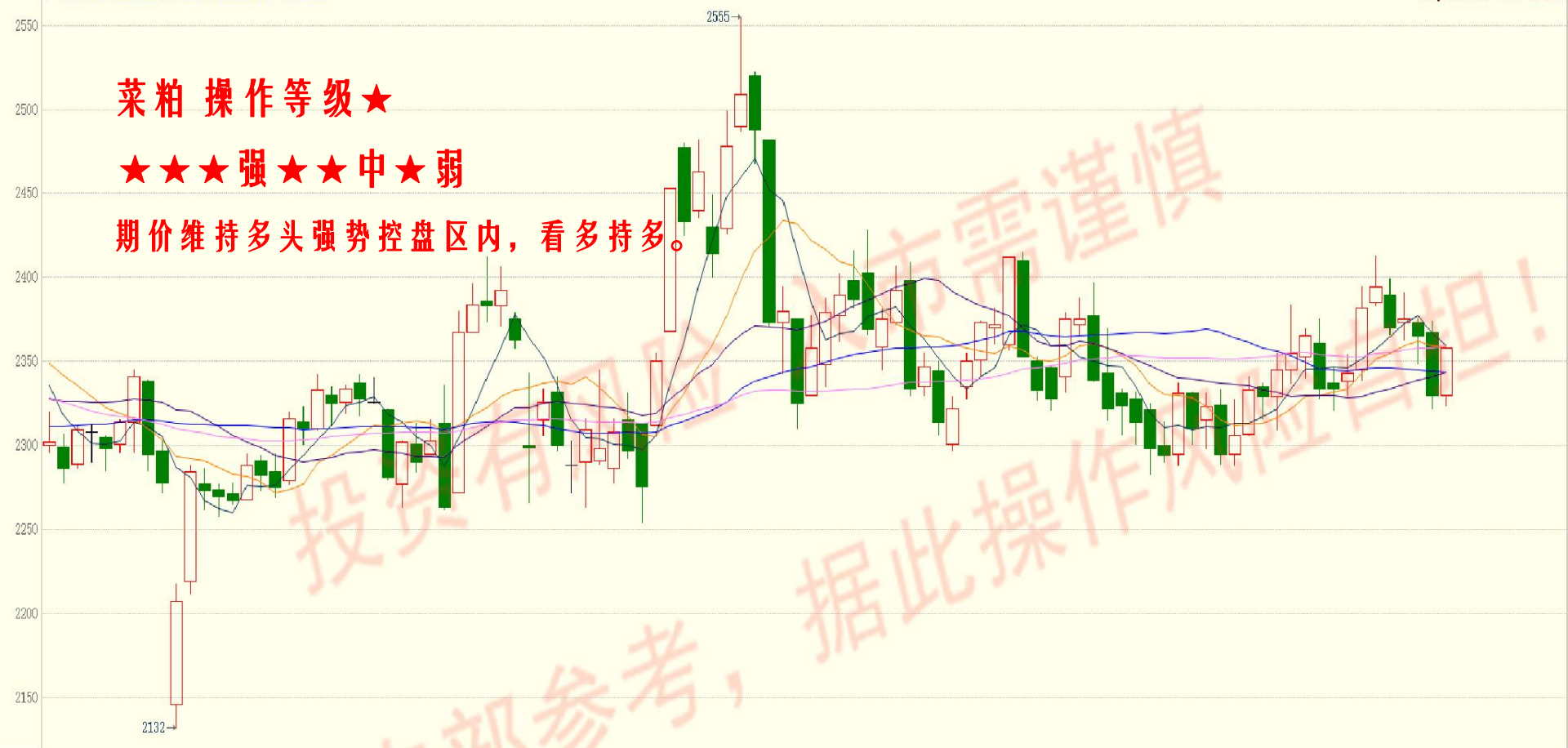


K MA5:2360 MA10:2358 MA20:2344 MA40:2344 MA60:2359

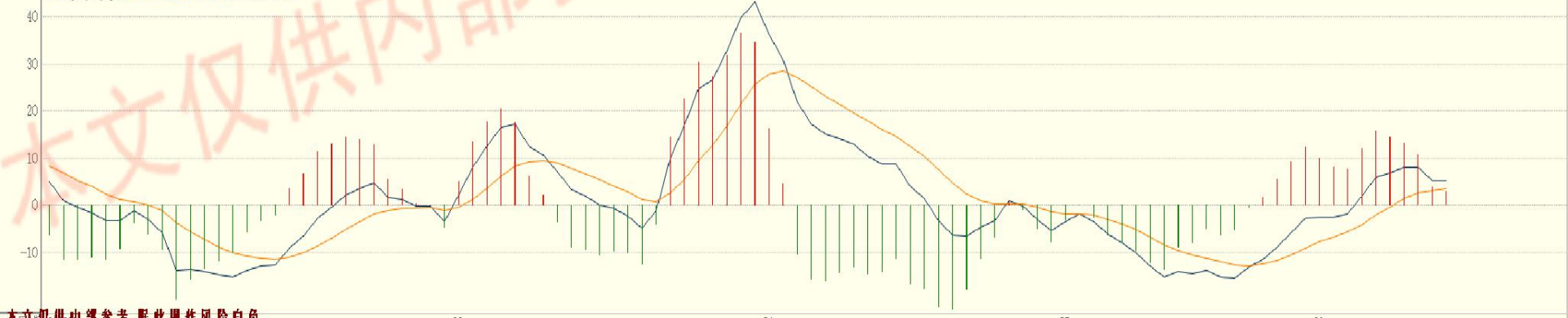
菜粕 操作等级★

★★★强★★中★弱

期价维持多头强势控盘区内，看多持多。



MACD(12,26,9) DIFF:5.2240 DEA:3.6691 MACD:3.1097

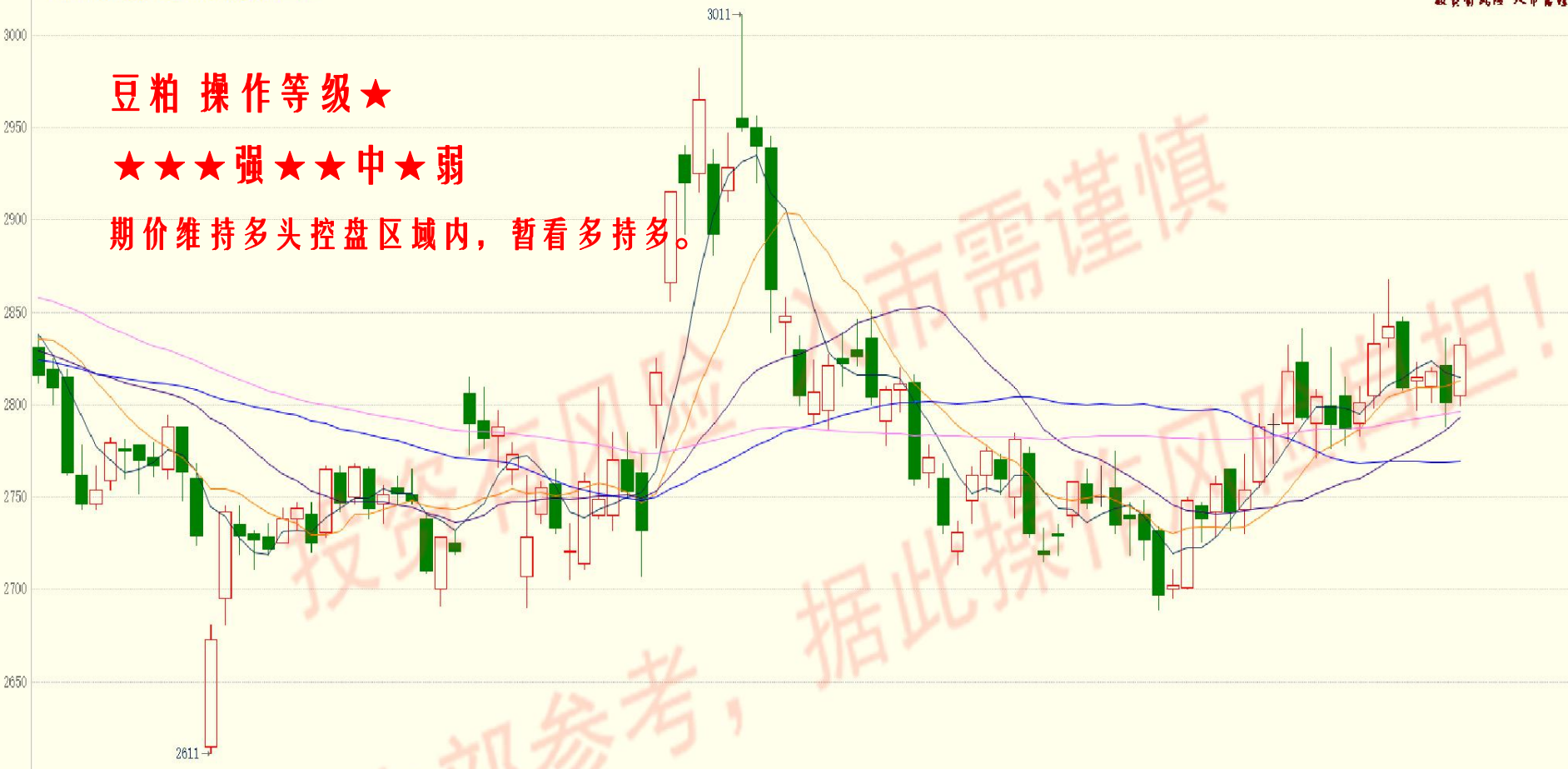


MA5:2815 MA10:2813 MA20:2793 MA40:2769 MA60:2796

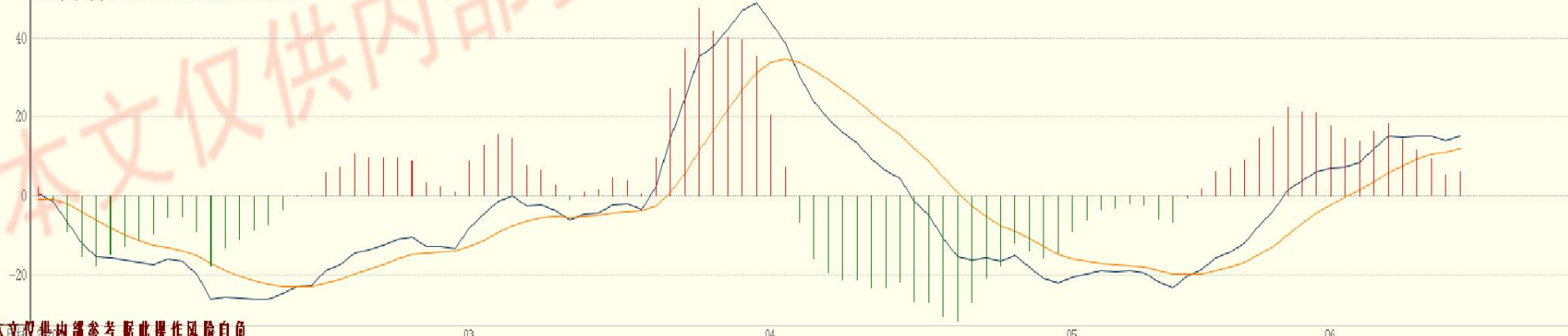
豆粕 操作等级★

★★★强★★中★弱

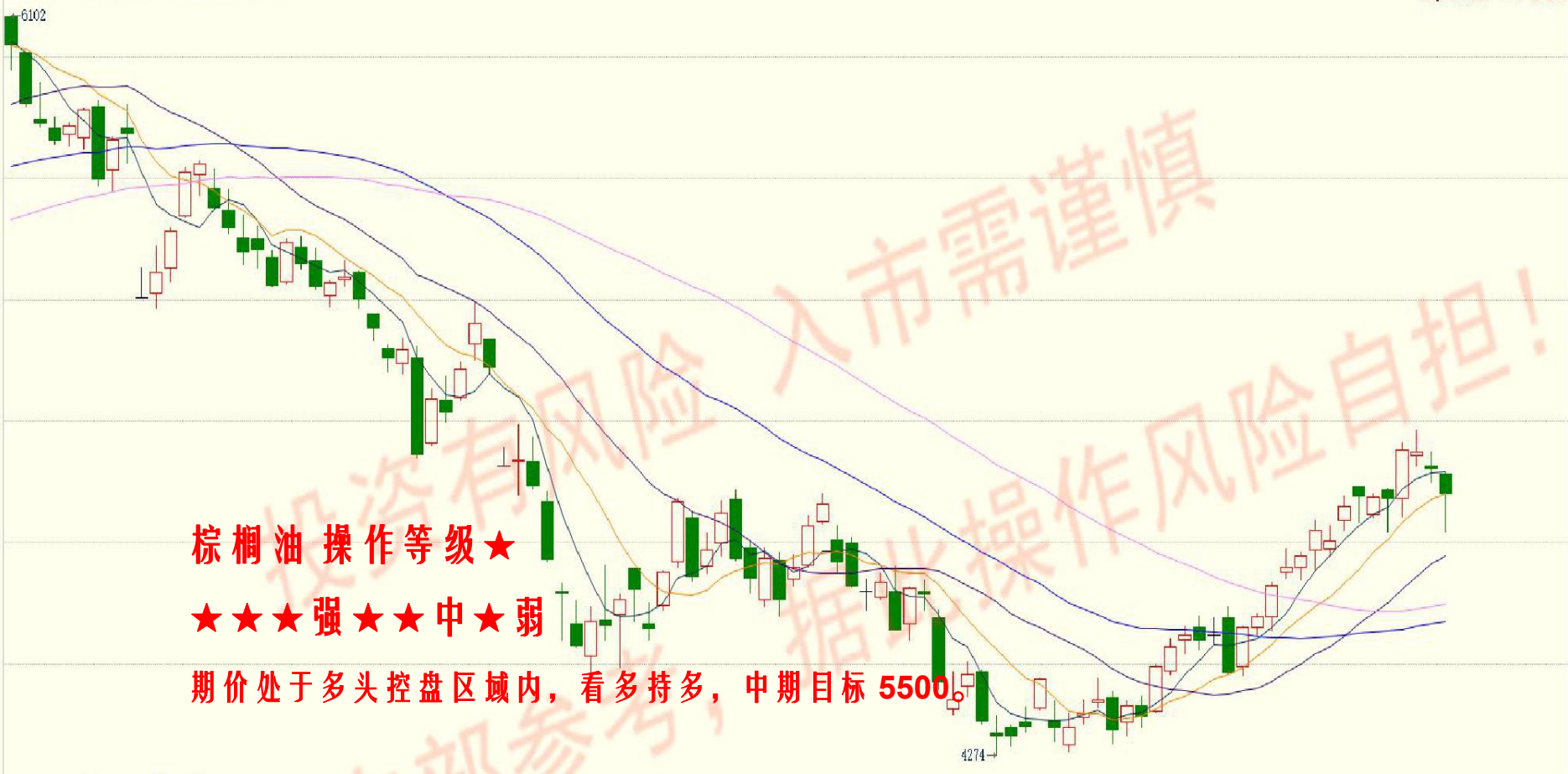
期价维持多头控盘区域内，暂看多持多。



MACD(12,26,9) DIFF:15.1355 DEA:11.9370 MACD:6.3971



K MA5:4974 MA10:4922 MA20:4767 MA40:4606 MA60:4648

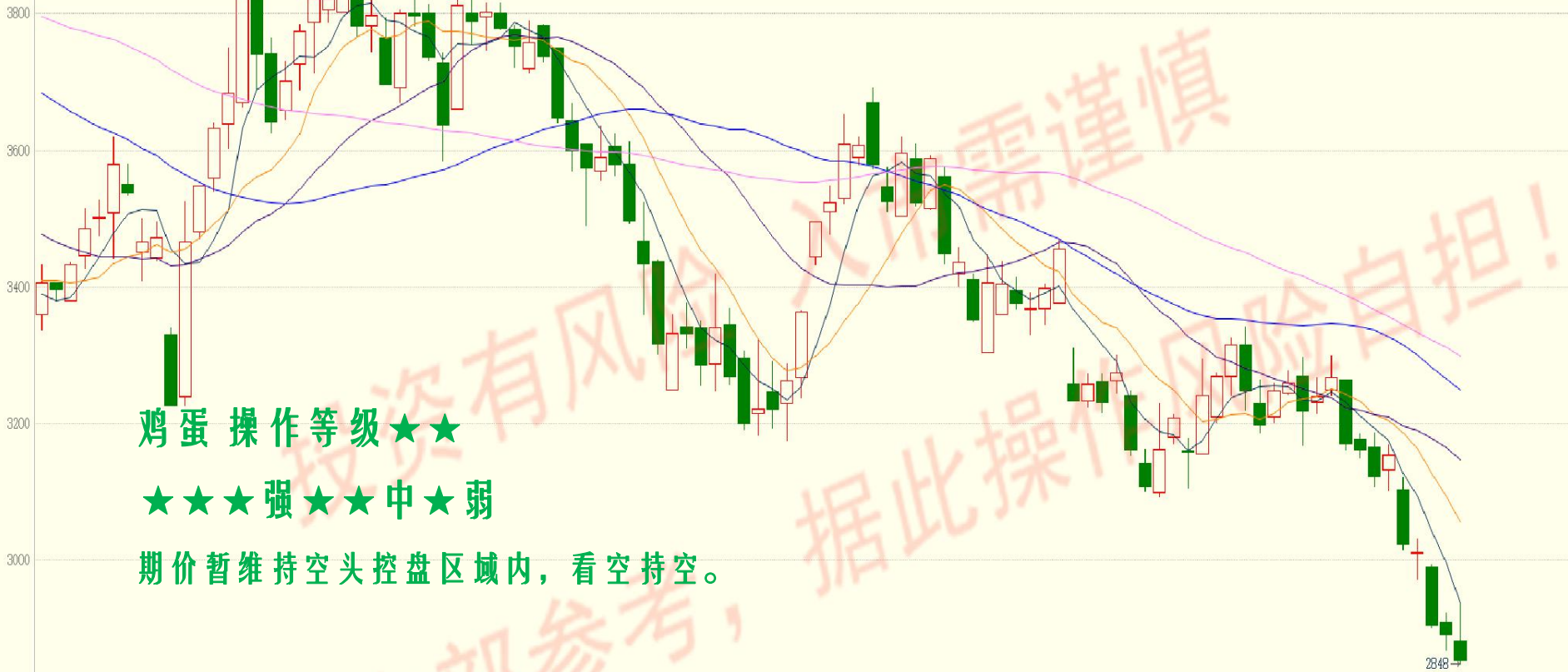


MACD(12,26,9) DIFF:113.8946 DEA:90.9057 MACD:45.9777



K MA5:2937 MA10:3056 MA20:3148 MA40:3249 MA60:3299

3908



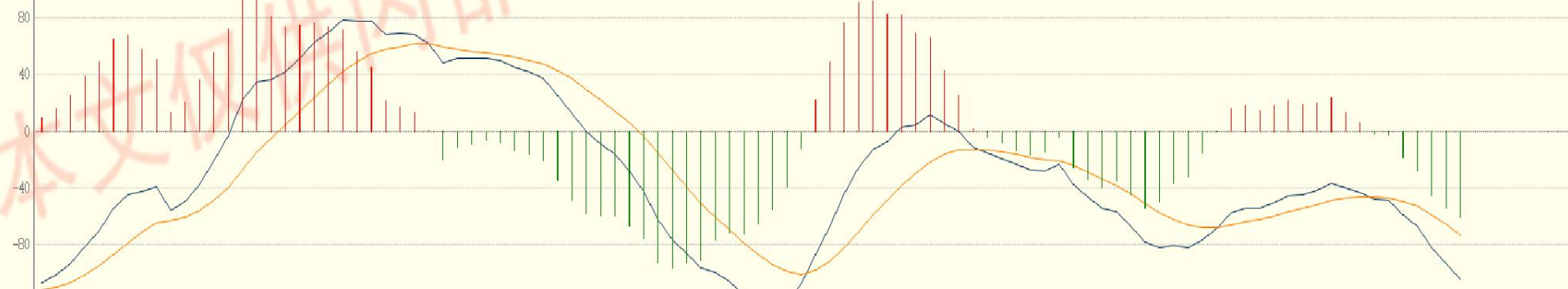
鸡蛋 操作等级★★

★★★强★★中★弱

期价暂维持空头控盘区域内，看空持空。

2848

MACD(12,26,9) DIFF:-104.2628 DEA:-73.3835 MACD:-61.7587



K MA5:5102 MA10:5064 MA20:5034 MA40:5058 MA60:5176



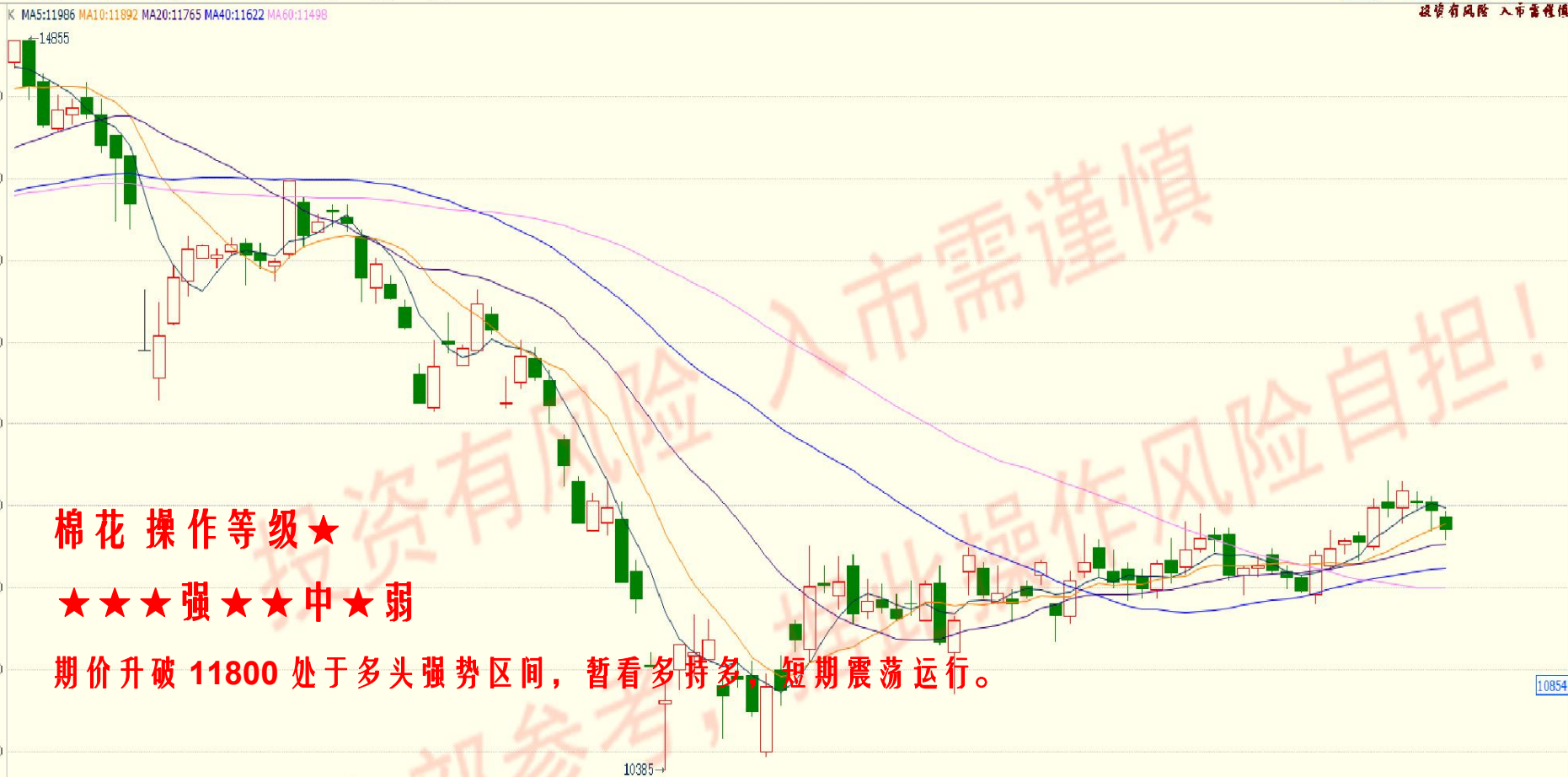
白糖 操作等级★

★★★强★★中★弱

期价下破支撑后，处于空头弱势区，短期震荡。

MACD(12,26,9) DIFF:4.2189 DEA:20.7651 MACD:33.0924

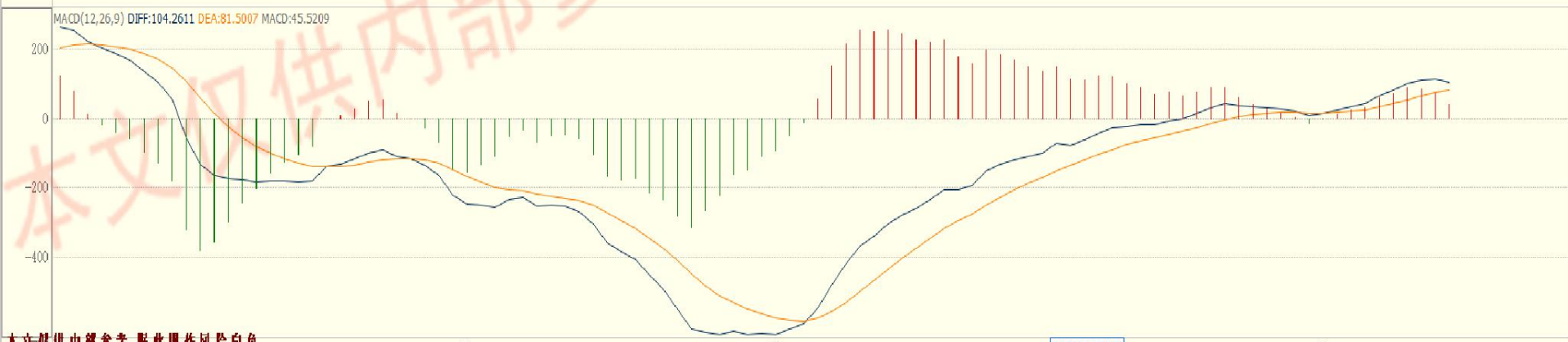




棉花操作等级★

★★★强★★中★弱

期价升破 11800 处于多头强势区间，暂看多持多，短期震荡运行。



风险揭示:您应当客观评估自身财务状况、交易经验，确定自身的风险偏好、风险承受能力和服务需求，并遵循“买卖自负”的金融市场原则，充分认识期货交的风险，了解任何有关期货行情的分析、预测都可能与实际情况有异。自行决定是否采纳期货公司提供的报告中给出的建议，并自行承担交易后果。

免责声明:本报告的信息均来源于非保密资料，本公司对这些信息的准确性和完整性不作任何保证。本报告中的观点、结论和建议并不代表作者对价格涨跌或市场走势的确定性判断。在任何情况下，本公司不对任何人因使用本报告中的任何内容所引致的任何损失负任何责任。本报告所载的意见或推测仅反映本公司于发布日的观点，在不同时期，本公司可发出与本报告所载意见或推测不一致的报告，投资者应当自行关注相应的更新或修改。