

# 看图说话

2020年06月18日

分析师：卢旭

从业资格号：F3018897

投资咨询号：Z0011867

QQ：942978631/1154393876

K MA5:3977.5 MA10:3983.9 MA20:3920.2 MA40:3879.3 MA60:3806.7

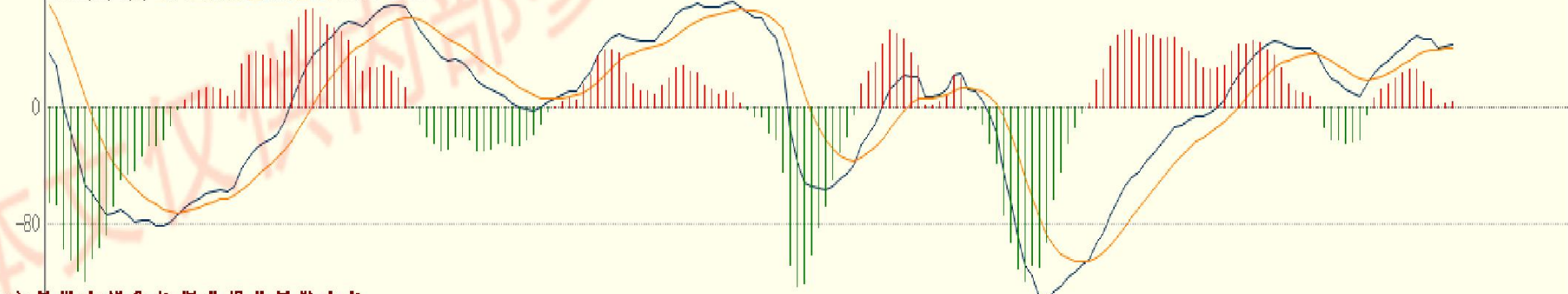


股指期貨操作等級★

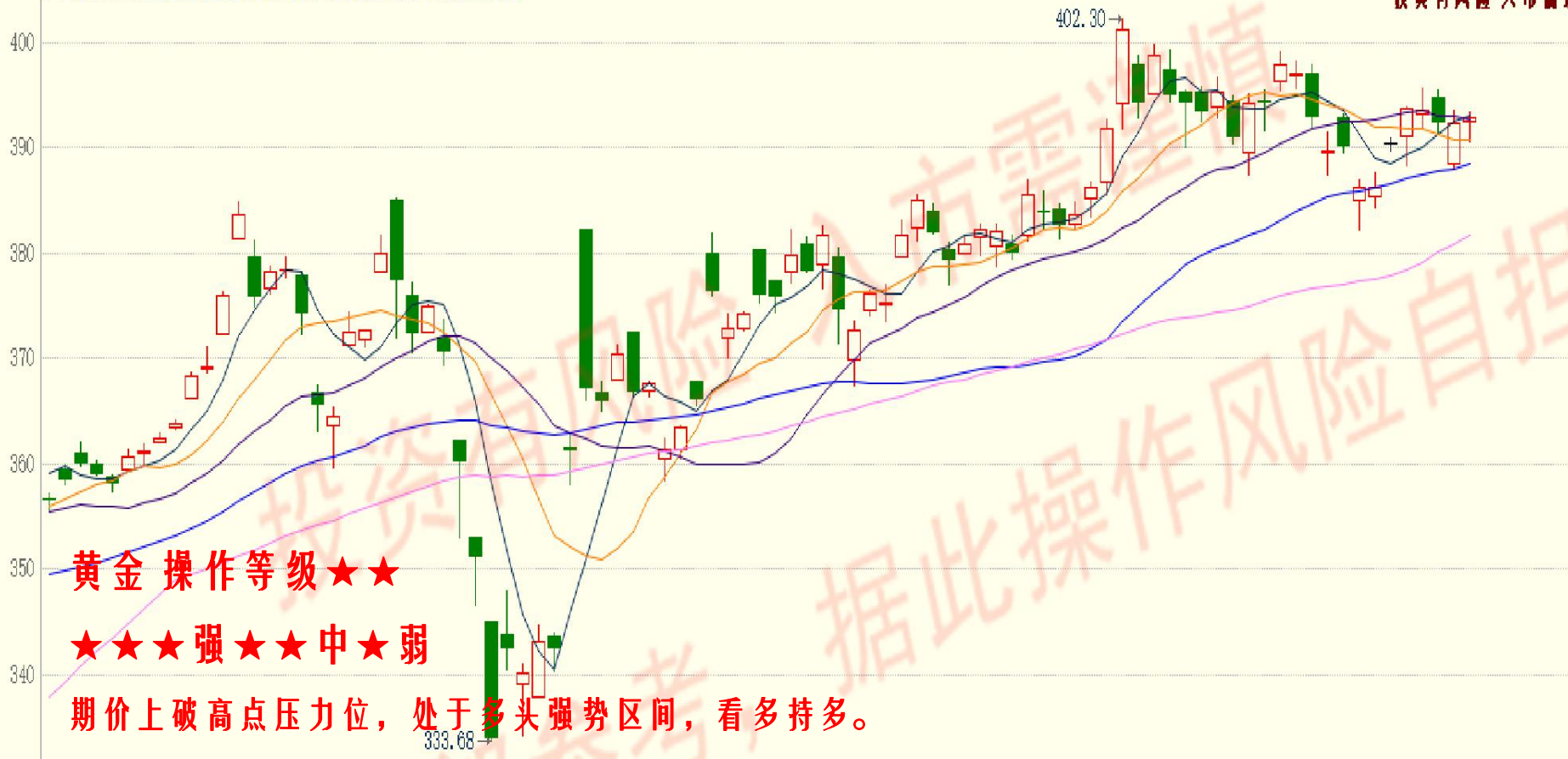
★★★強★★中★弱

期價升破 3800 維持多头控盤区域内，暫看多持多。

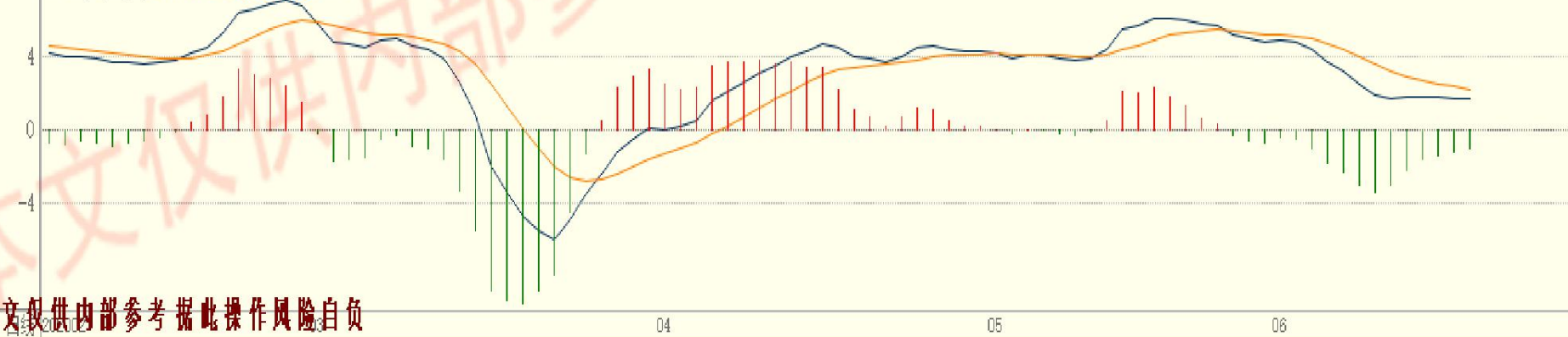
MACD(12,26,9) DIFF:42.2439 DEA:40.1727 MACD:4.1425

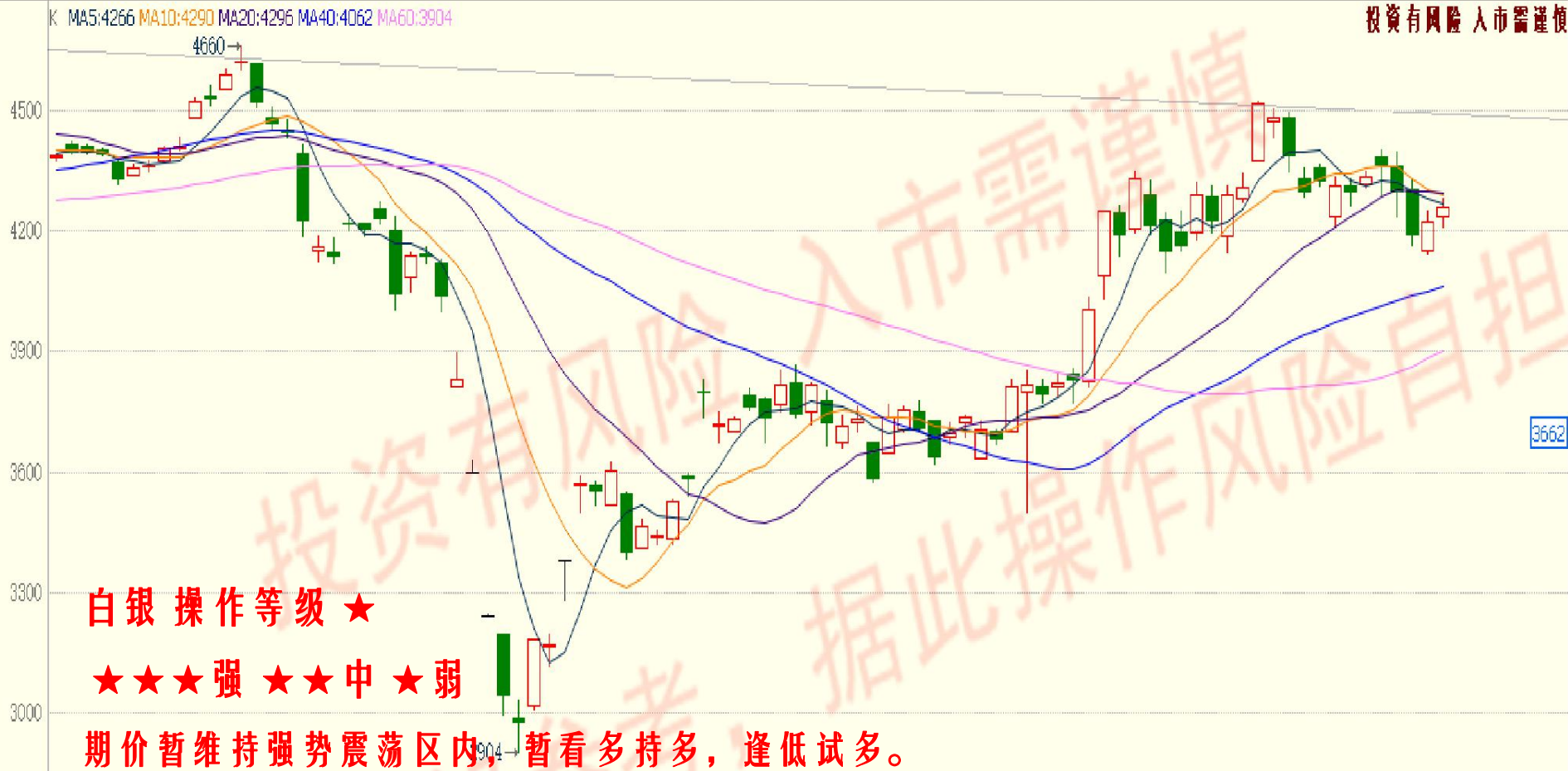


K MA5:393.02 MA10:390.80 MA20:392.71 MA40:388.51 MA60:381.79



MACD(12,26,9) DIFF:1.6438 DEA:2.2037 MACD:-1.1197



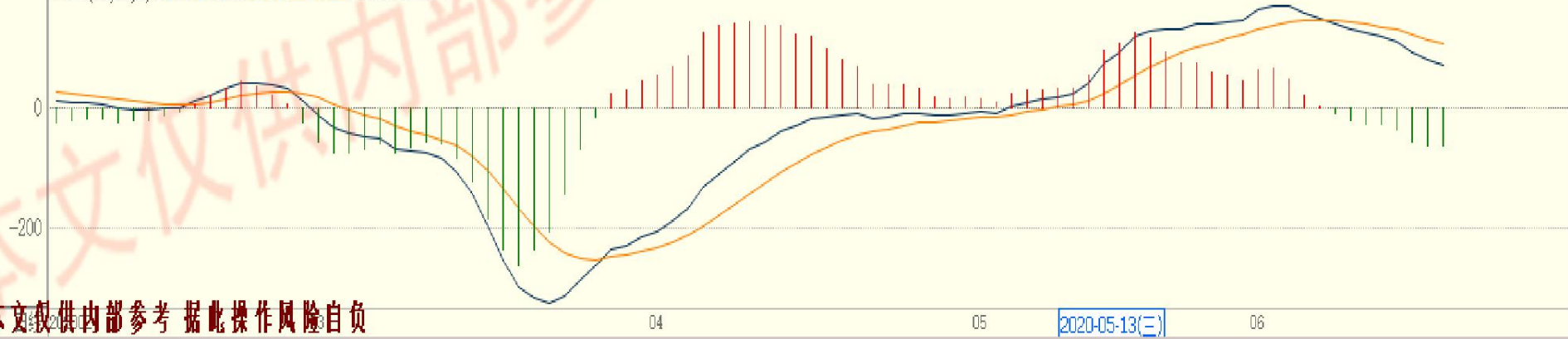


白银 操作等级 ★

★★★强 ★★中 ★弱

期价暂维持强势震荡区内，暂看多持多，逢低试多。

MACD(12,26,9) DIFF:72.3123 DEA:105.4312 MACD:-66.2979



K MA5:46798 MA10:46281 MA20:45150 MA40:43884 M 走势图 21



沪铜 操作等级★★

★★★强★★中★弱

期价暂处于多头强势区域内，暂看多持多。

MACD(12,26,9) DIFF:1046.3640 DEA:923.0836 MACD:246.5608



K MA5:13696 MA10:13547 MA20:13277 MA40:12867 MA60:12493



沪锡 操作等级 ★

★★★强 ★★中 ★弱

期价维持多头强势区域，看多持多，下破 13000 多单止盈离场。

10565

MACD(12,26,9) DIFF:307.4493 DEA:269.4979 MACD:75.9029



K MA5:16485 MA10:16502 MA20:16445 MA40:16397 MA60:16067



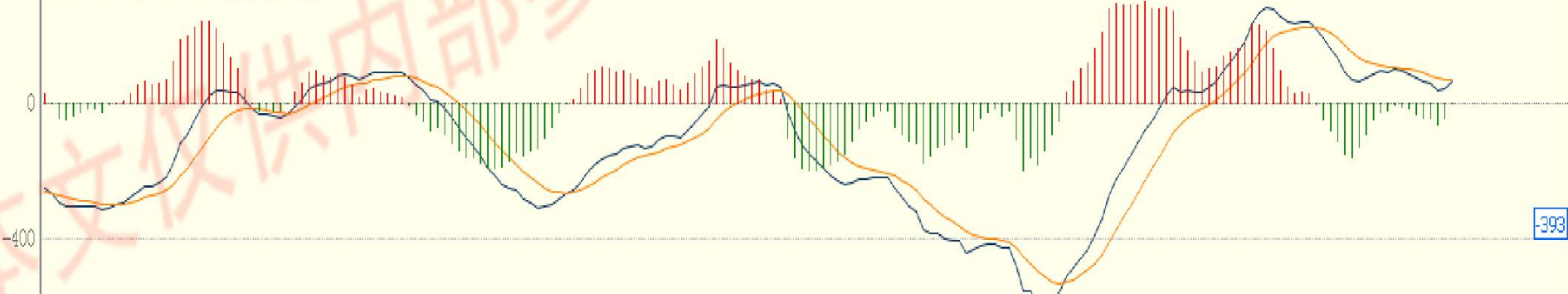
### 沪锌 操作等级★

★★★强★★中★弱

期价升破压力线延续多头强势区域，暂看多持多。

14075 →

MACD(12,26,9) DIFF:61.7561 DEA:64.2506 MACD:-4.9891



393

K MA5:3596 MA10:3601 MA20:3575 MA40:3493 MA60:3430

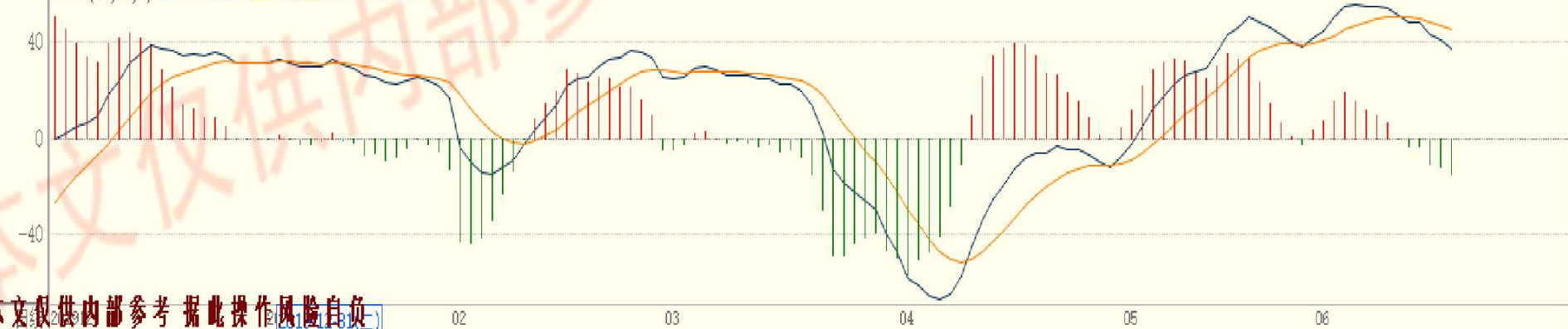


螺纹钢 操作等级★

★★★强★★中★弱

期价上破长期压力位后，处于多头强势控盘区域，看多持多。

MACD(12,26,9) DIFF:37.5644 DEA:45.1574 MACD:-15.1859





K MA5:769.2 MA10:764.1 MA20:746.6 MA40:689.6 MA60:655.5

铁矿石 操作等级★★

★★★强★★中★弱

维持多头强势区域，看多持多，下破746终止多头策略。



MACD(12,26,9) DIFF:29.0429 DEA:31.1549 MACD:-4.2240



K MA5:1178.5 MA10:1181.0 MA20:1172.0 MA40:1137.4 MA60:1135.1

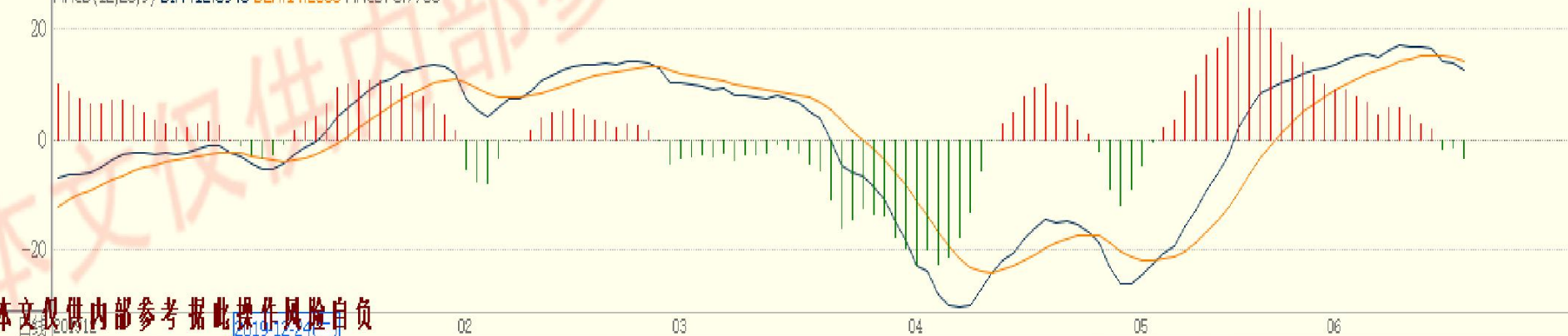


焦煤 操作等级 ★★

★★★强 ★★中 ★弱

期价上破 1140 后总体处于强势区，看多持多，下破 1140 终止多头策略。

MACD(12,26,9) DIFF:12.3943 DEA:14.2835 MACD:-3.7783

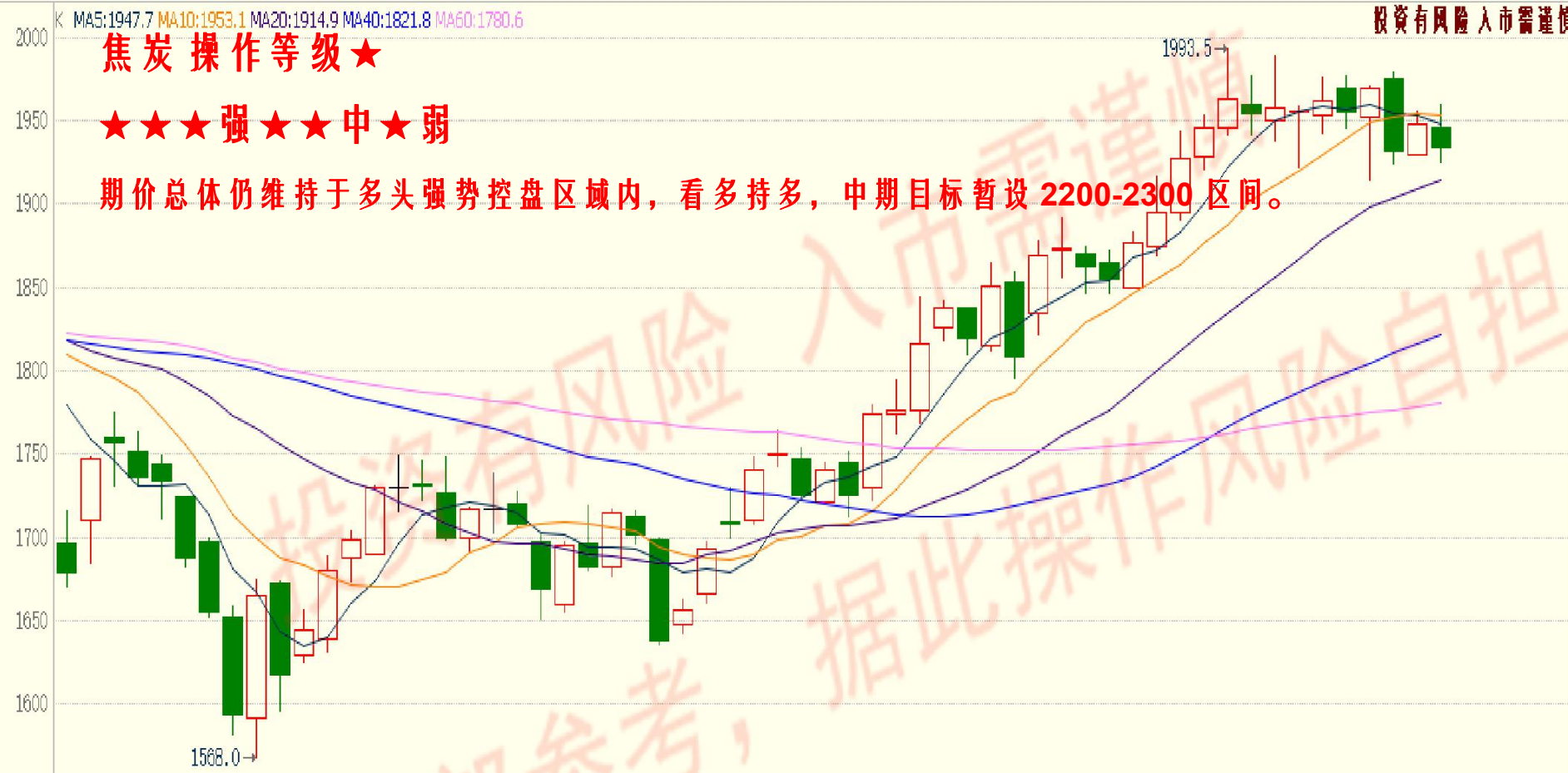


K MA5:1947.7 MA10:1953.1 MA20:1914.9 MA40:1821.8 MA60:1780.6

# 焦炭操作等级★

★★★强★★中★弱

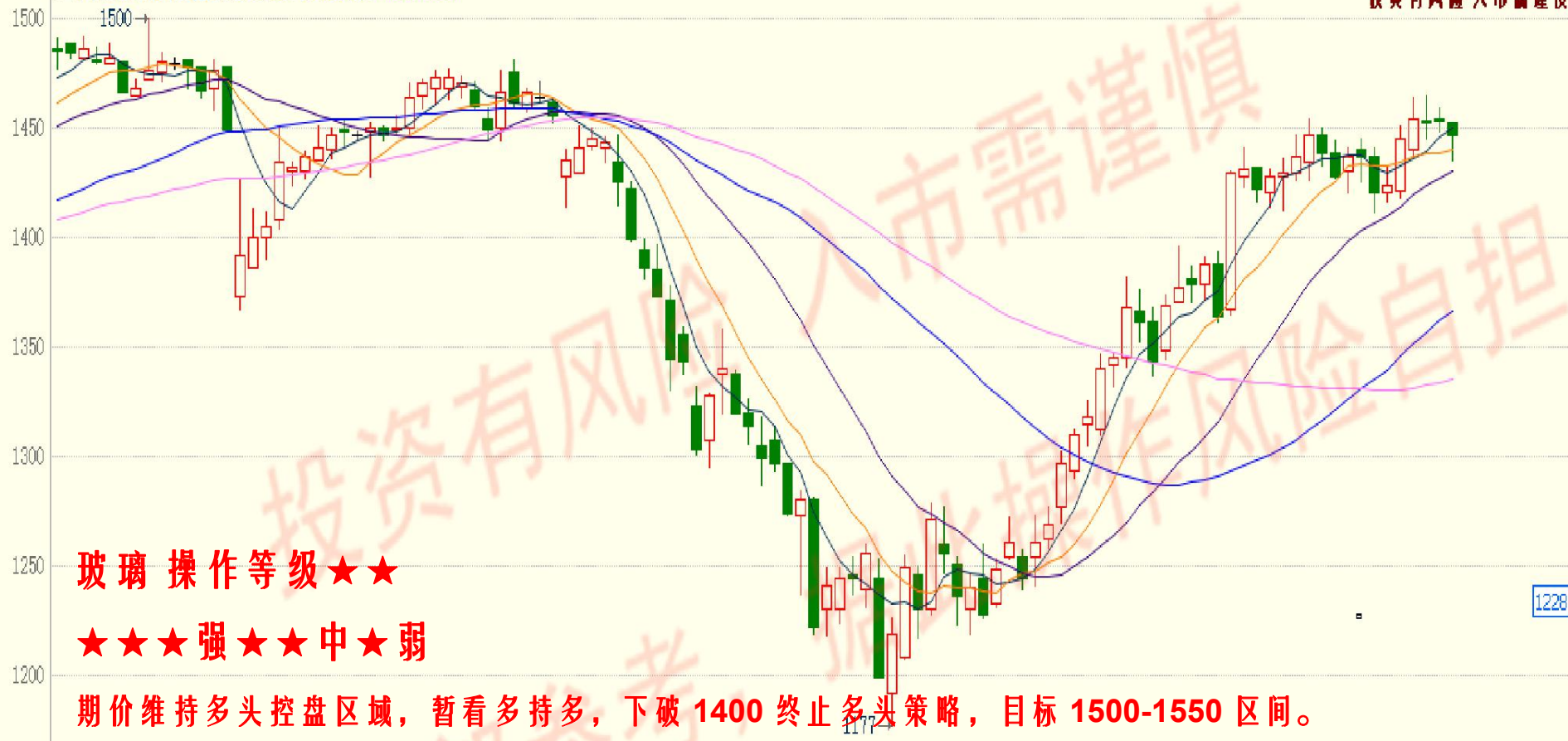
期价总体仍维持于多头强势控盘区域内，看多持多，中期目标暂设 2200-2300 区间。



MACD(12,26,9) DIFF:44.1003 DEA:49.2900 MACD:-10.3795

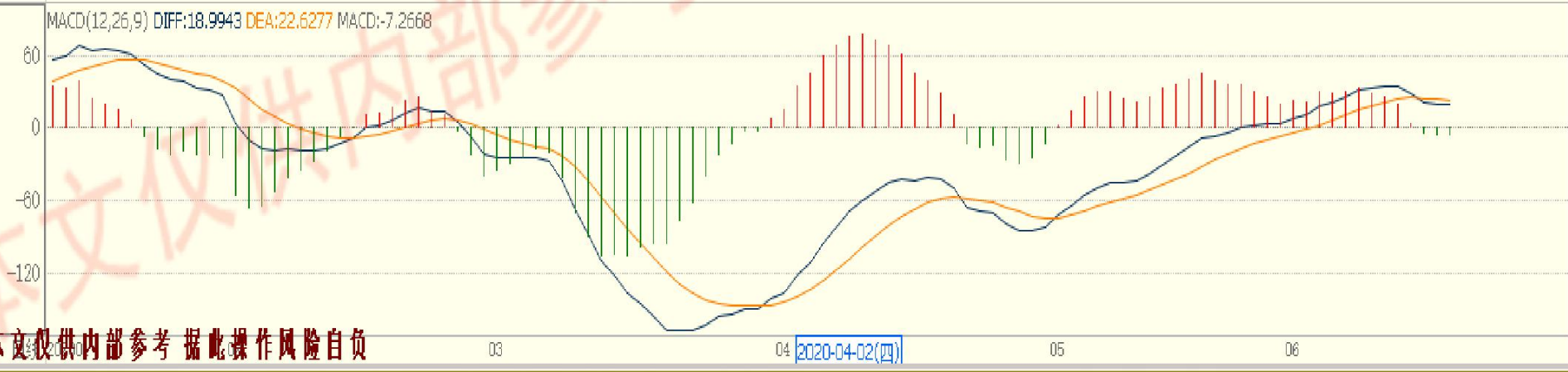


K MA5:1450 MA10:1440 MA20:1430 MA40:1366 MA60:1336



MACD(12,26,9) DIFF:26.7199 DEA:29.2185 MACD:-4.9972





13219

K MA5:10358 MA10:10455 MA20:10374 MA40:10250 MA60:10119



橡胶操作等级★★

★★★强★★中★弱

期价跌破 10500 后趋势转弱，看空持仓，短期震荡偏弱，升破 10500 空单止盈离场。

MACD(12,26,9) DIFF:41.4276 DEA:64.5499 MACD:-46.2445



本文仅供内部参考 据此操作风险自担

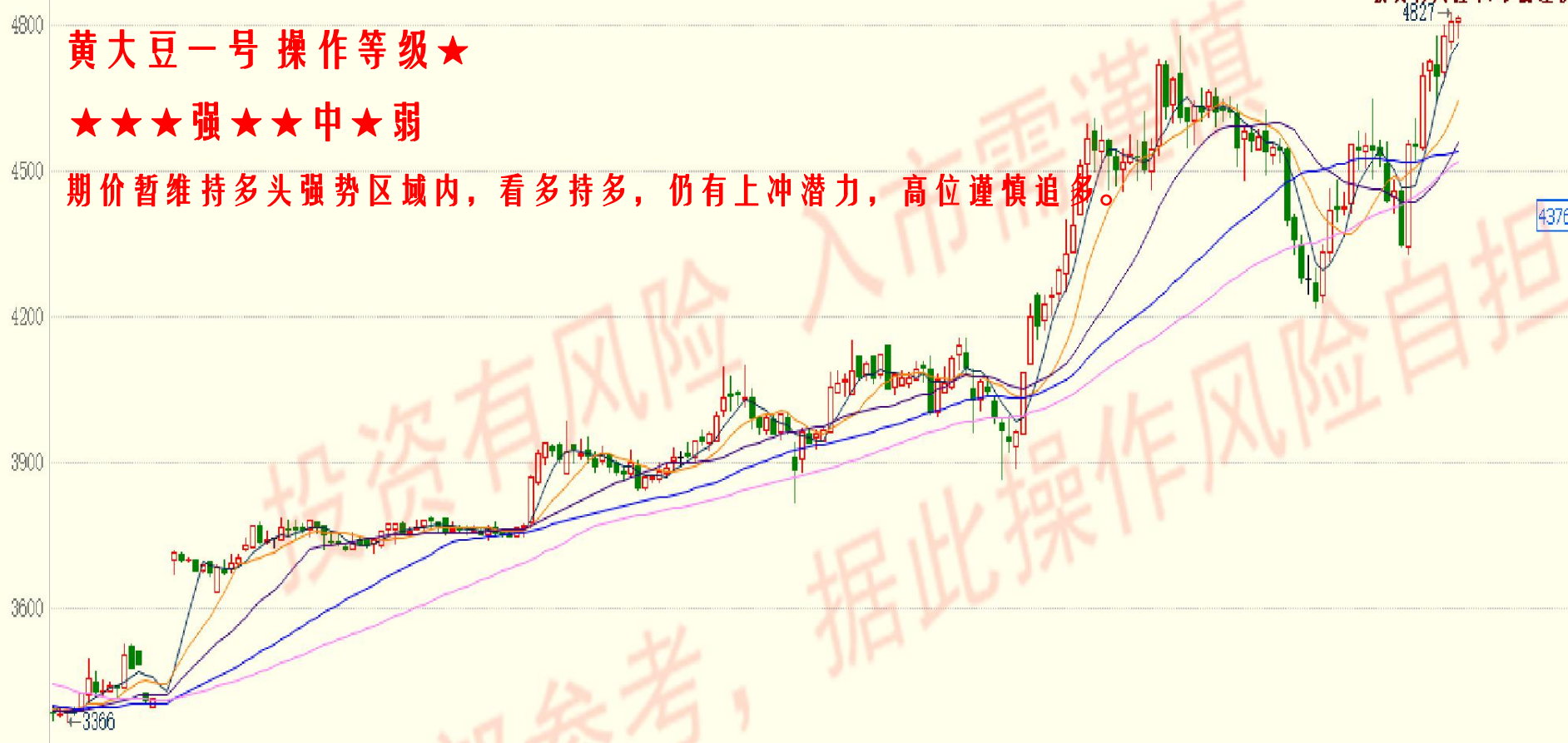
2020-04-28(二)

K MA5:4764 MA10:4643 MA20:4560 MA40:4542 MA60:4520

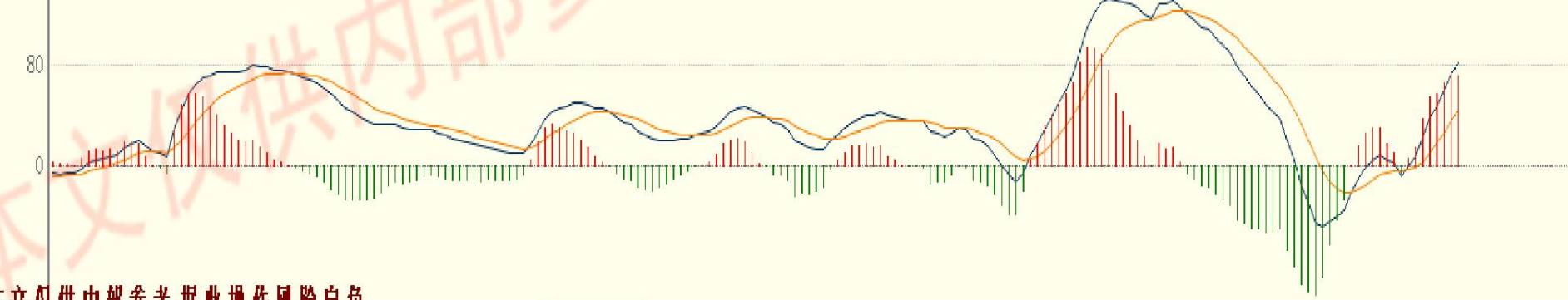
# 黄大豆一号 操作等级★

★★★强★★中★弱

期价暂维持多头强势区域内，看多持多，仍有上冲潜力，高位谨慎追多。



MACD(12,26,9) DIFF:81.2243 DEA:44.9002 MACD:72.6481



K MA5:2333 MA10:2355 MA20:2345 MA40:2341 MA60:2361

### 菜粕 操作等级★

★★★强★★中★弱

期价维持多头强势区内，看多持多，逢低少量吸纳，下破 2280 止损。



MACD(12,26,9) DIFF:-1.1775 DEA:2.0056 MACD:-6.3661





K MA5:2817 MA10:2820 MA20:2803 MA40:2772 MA60:2799

3164

豆粕 操作等级★★

★★★强★★中★弱

期价维持多头控盘区域内，暂看多持多。

3100

3000

2900

2800

2700

2611

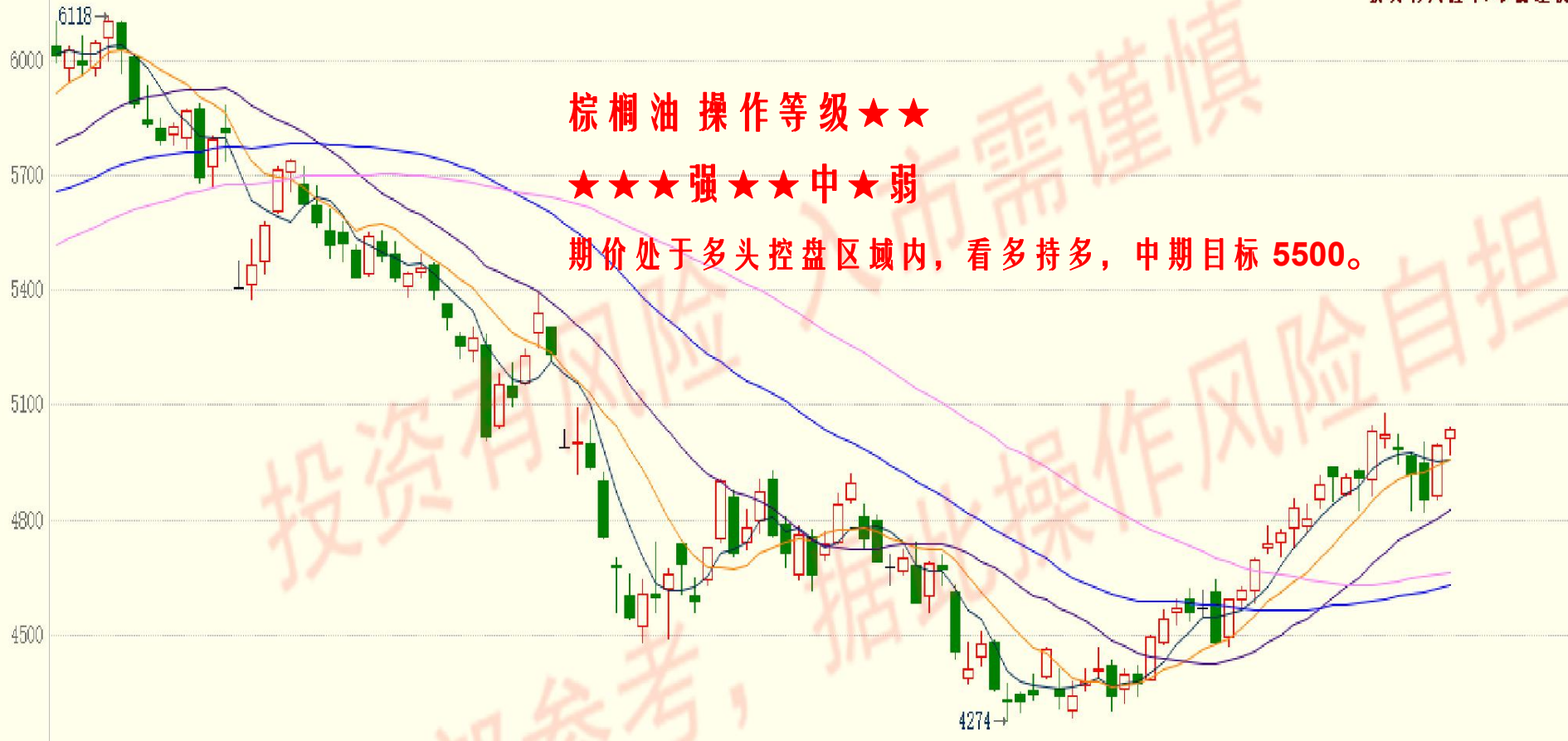
投資有風險 入市需謹慎  
豆粕操作風險自擔

MACD(12,26,9) DIFF:13.9393 DEA:13.0039 MACD:1.8706

40

0

K MA5:4958 MA10:4958 MA20:4828 MA40:4628 MA60:4665

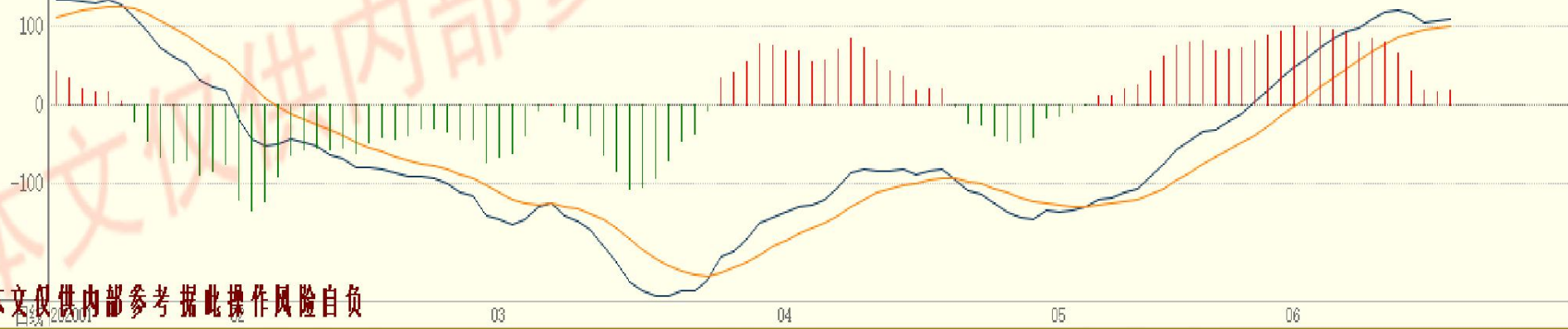


棕榈油 操作等级★★

★★★强★★中★弱

期价处于多头控盘区域内，看多持多，中期目标 5500。

MACD(12,26,9) DIFF:108.7119 DEA:98.2978 MACD:20.8283

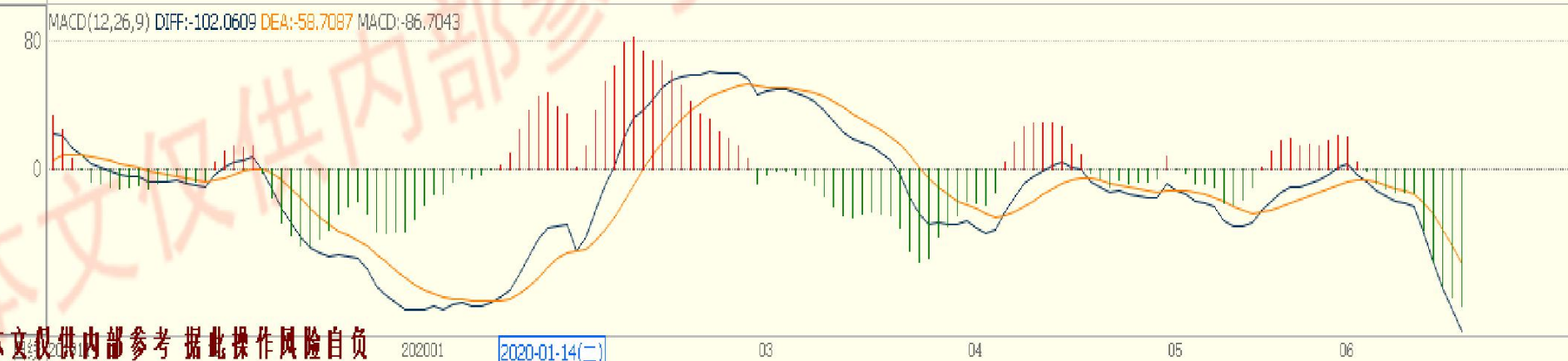




鸡蛋 操作等级★

★★★强★★中★弱

期价暂维持空头控盘区域内，看空持空。



K MA5:5066 MA10:5086 MA20:5048 MA40:5043 MA60:5157

5788

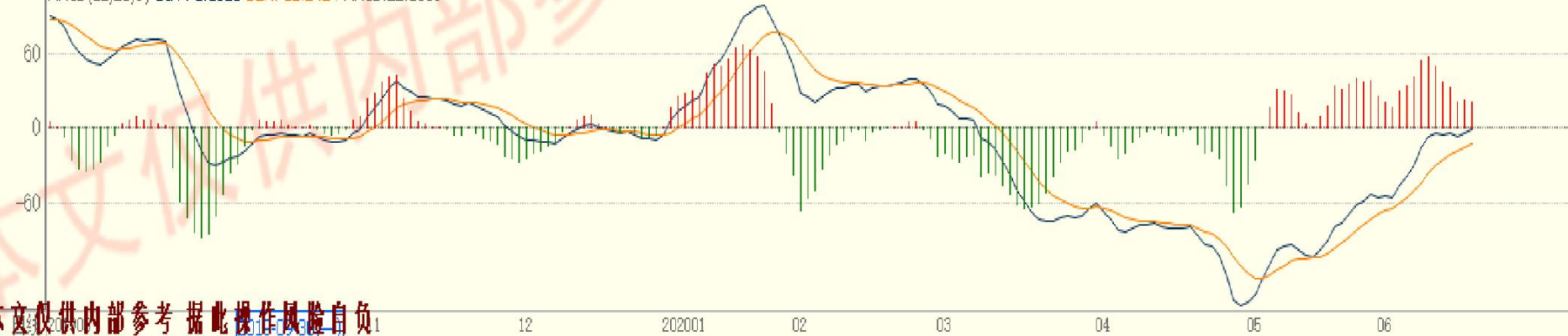


### 白糖 操作等级★

★★★强★★中★弱

期价处于空头弱势区间内，短期或呈现震荡偏强走势，小波段日内操作为宜。

MACD(12,26,9) DIFF:-1.1520 DEA:-12.2424 MACD:22.1809



K MA5:11844 MA10:11908 MA20:11778 MA40:11654 MA60:11496



棉花操作等级★

★★★强★★中★弱

期价升破 11800 处于多头强势区间，暂看多持多。

MACD(12,26,9) DIFF:72.3162 DEA:79.5256 MACD:-14.4188



**风险提示:**您应当客观评估自身财务状况、交易经验，确定自身的风险偏好、风险承受能力和服务需求，并遵循“买卖自负”的金融市场原则，充分认识期货交的风险，了解任何有关期货行情的分析、预测都可能与实际情况有异。自行决定是否采纳期货公司提供的报告中给出的建议，并自行承担交易后果。

**免责声明:**本报告的信息均来源于非保密资料，本公司对这些信息的准确性和完整性不作任何保证。本报告中的观点、结论和建议并不代表作者对价格涨跌或市场走势的确定性判断。在任何情况下，本公司不对任何人因使用本报告中的任何内容所引致的任何损失负任何责任。本报告所载的意见或推测仅反映本公司于发布日的观点，在不同时期，本公司可发出与本报告所载意见或推测不一致的报告，投资者应当自行关注相应的更新或修改。